



XIII
INTERNATIONAL
WINTER ROAD
CONGRESS

QUÉBEC, FEBRUARY 8 TO 11, 2010



Québec 

SUSTAINABLE WINTER SERVICE FOR ROAD USERS

*Optima : Road weather informations
dedicated to road sections*

Odile Coudert

Météo-France

Head of Road Weather Department

Odile.coudert@meteo.fr



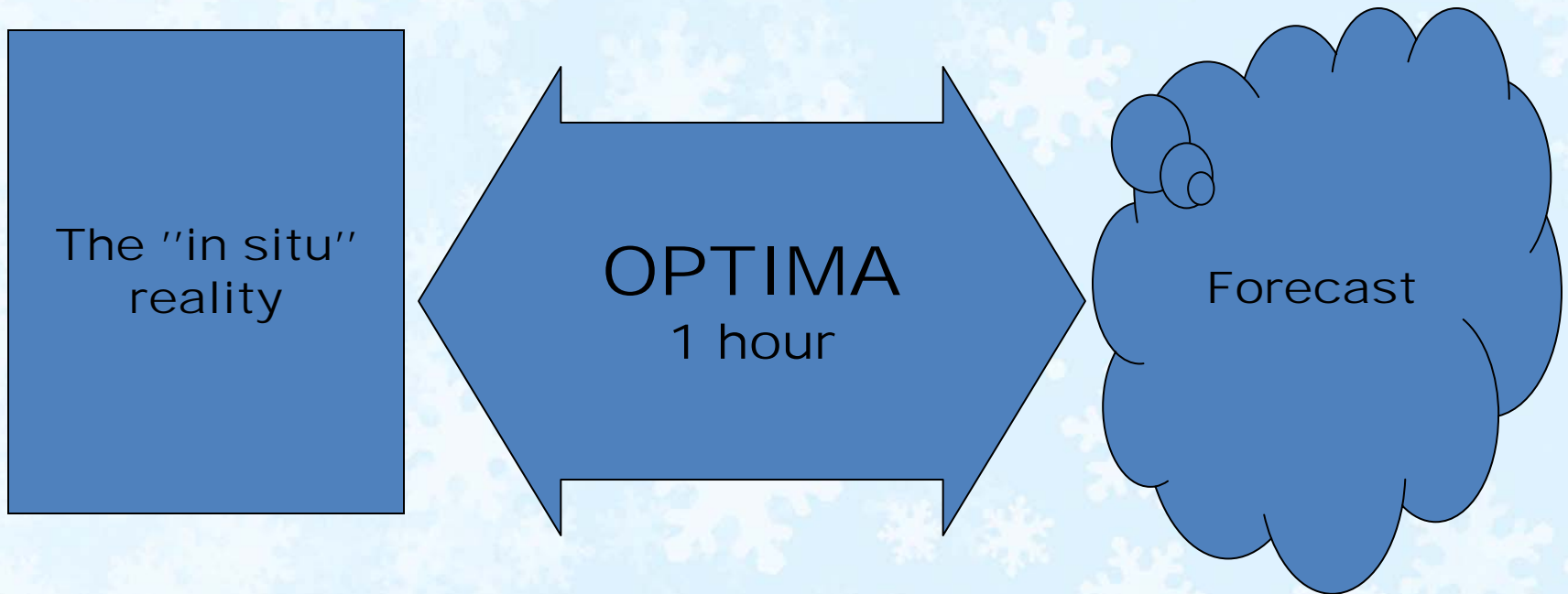
 **METEO FRANCE**
Toujours un temps d'avance

1. [Optima's general presentation](#)
2. The visualisation of the forecasted parameters
3. The road weather risk interface in Optima
4. The follow-up of a snow event on France
5. Conclusions

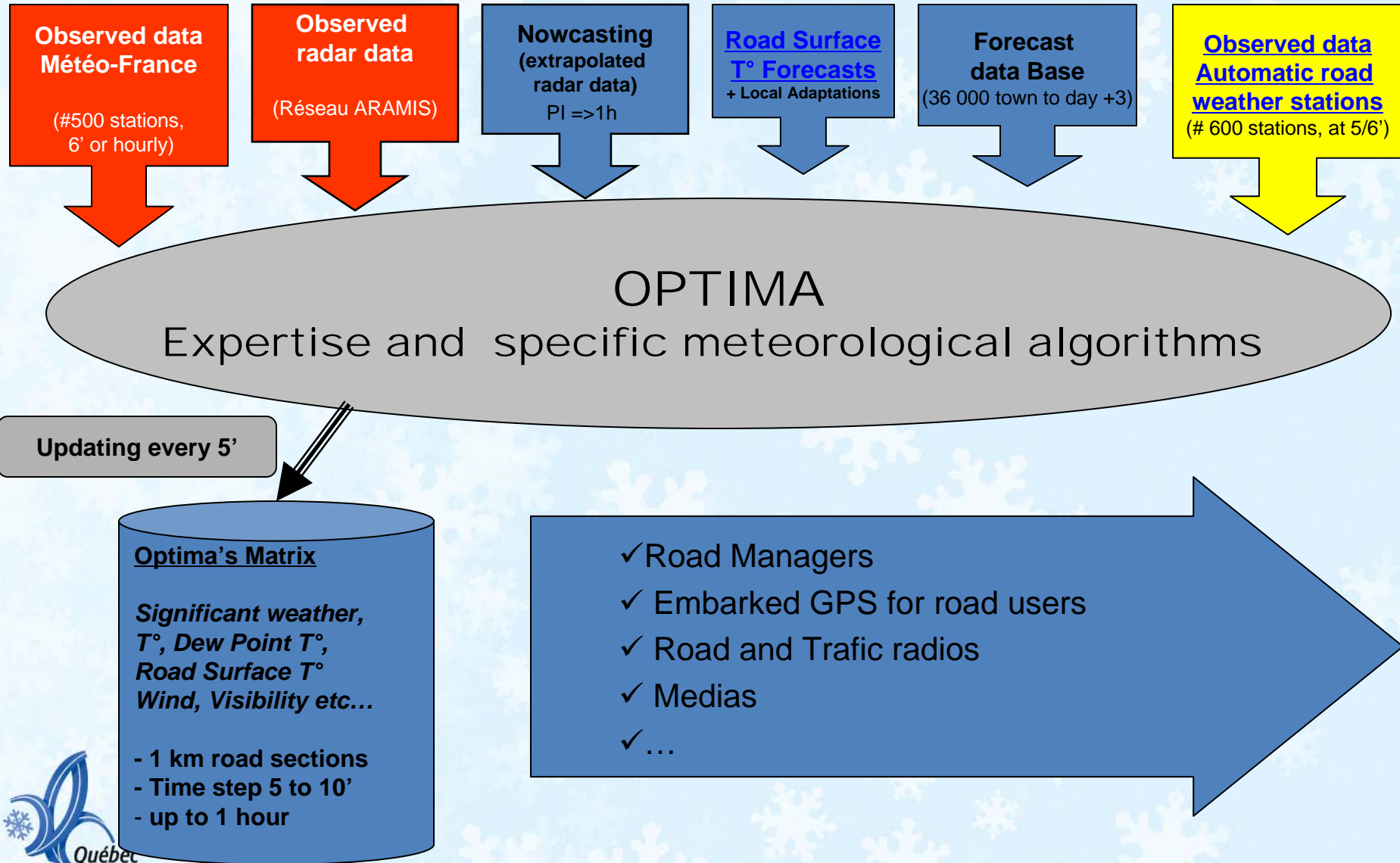
OPTIMA

- **OPTIMA (Road weather informations dedicated to road sections), is a global approach of data fusion and specific road weather algorithms implementation, to obtain the best road weather information, according to the state of art, at 1 km resolution, on the road network.**
- **In 2009, 120 000 km of the french road network are covered.**

OPTIMA : link between reality and forecast



OPTIMA : Synthetic diagram

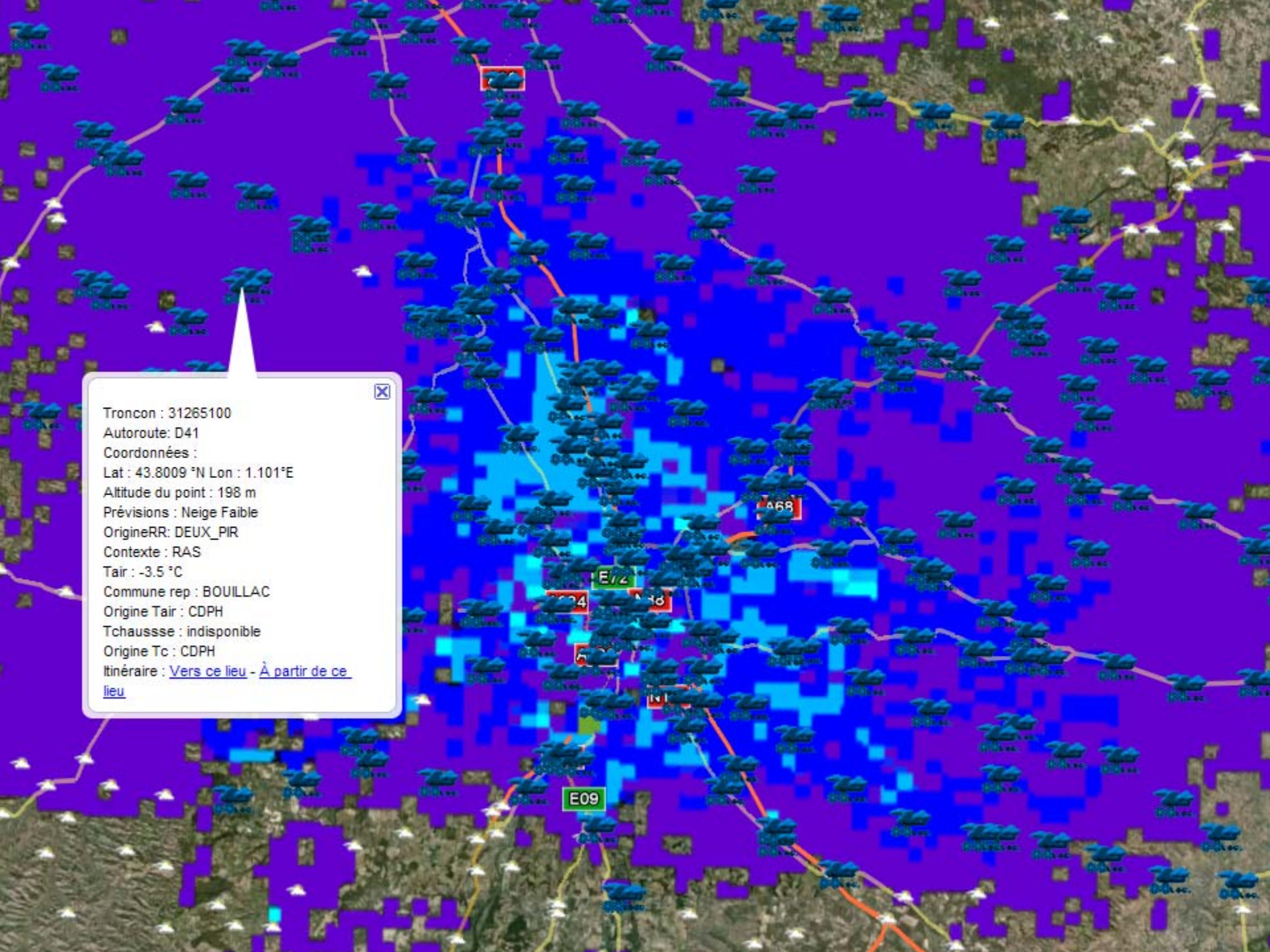


Forecasted parameters in Optima

- **Precipitations** : Freezing Rain, Snow, Sleet, Hail, Rain, Drizzle.
- **Intensity of the precipitations**: light, moderate or heavy.
- **Air and dew point Temperature**
- **Road Surface Temperature**
- **Altitude of the Rain/Snow transition**
- **Wind and squalls**
- **Visibility**
- **Thunderstorms**
- *Road surface condition*
- *Snow height*

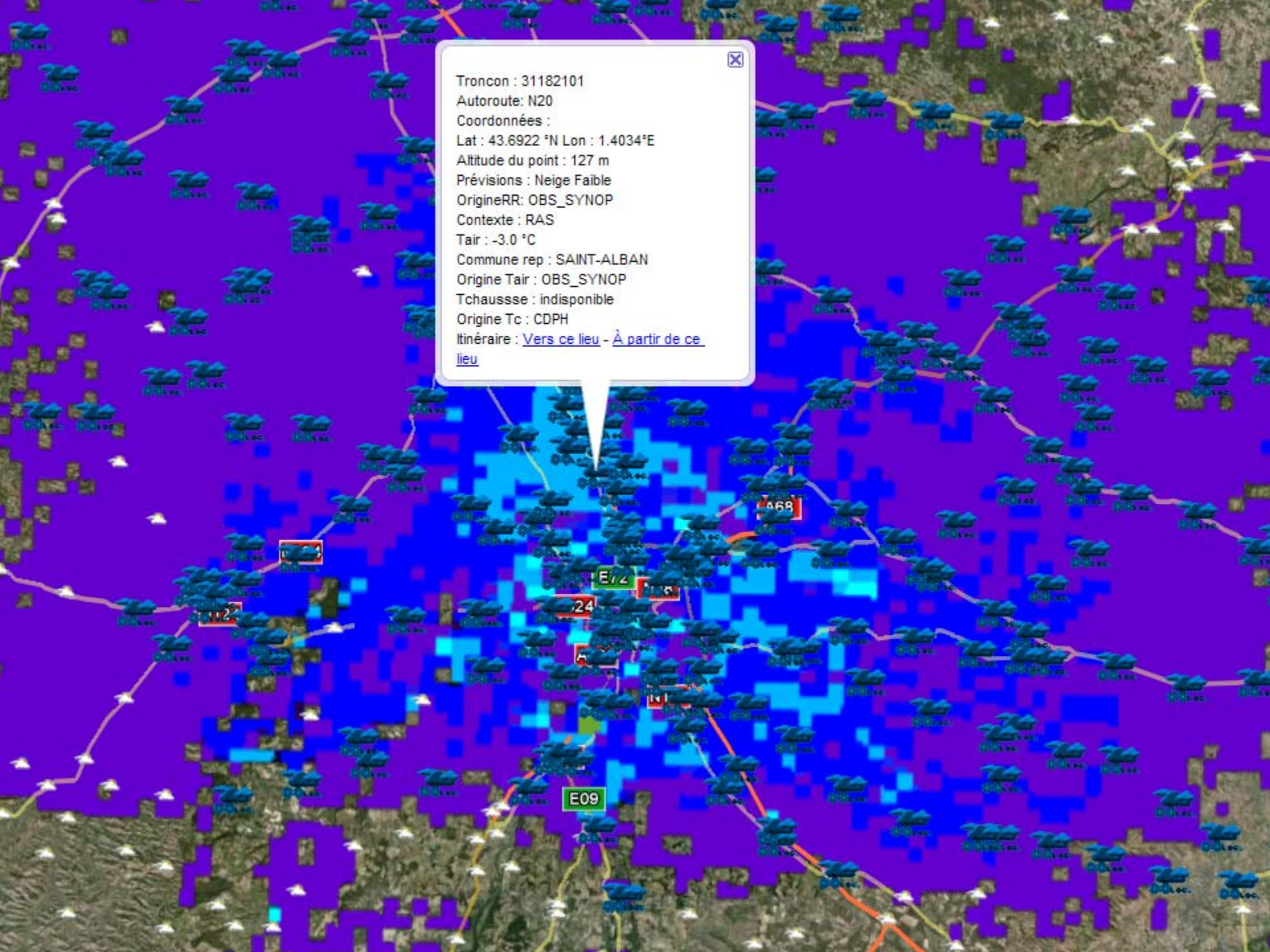
At each parameter is associated a fiability index according to the quality, and the amount, of input sources.

Observed and forecasted data fusion



Tronçon : 31265100
Autoroute: D41
Coordonnées :
Lat : 43.8009 °N Lon : 1.101°E
Altitude du point : 198 m
Prévisions : Neige Faible
OrigineRR: DEUX_PIR
Contexte : RAS
Tair : -3.5 °C
Commune rep : BOUILLAC
Origine Tair : CDPH
Tchausse : indisponible
Origine Tc : CDPH
Itinéraire : [Vers ce lieu](#) - [À partir de ce lieu](#)

Troncon : 31182101
Autoroute: N20
Coordonnées :
Lat : 43.6922 °N Lon : 1.4034°E
Altitude du point : 127 m
Prévisions : Neige Faible
OrigineRR: OBS_SYNOP
Contexte : RAS
Tair : -3.0 °C
Commune rep : SAINT-ALBAN
Origine Tair : OBS_SYNOP
Tchausse: indisponible
Origine Tc : CDPH
Itinéraire : [Vers ce lieu - À partir de ce lieu](#)

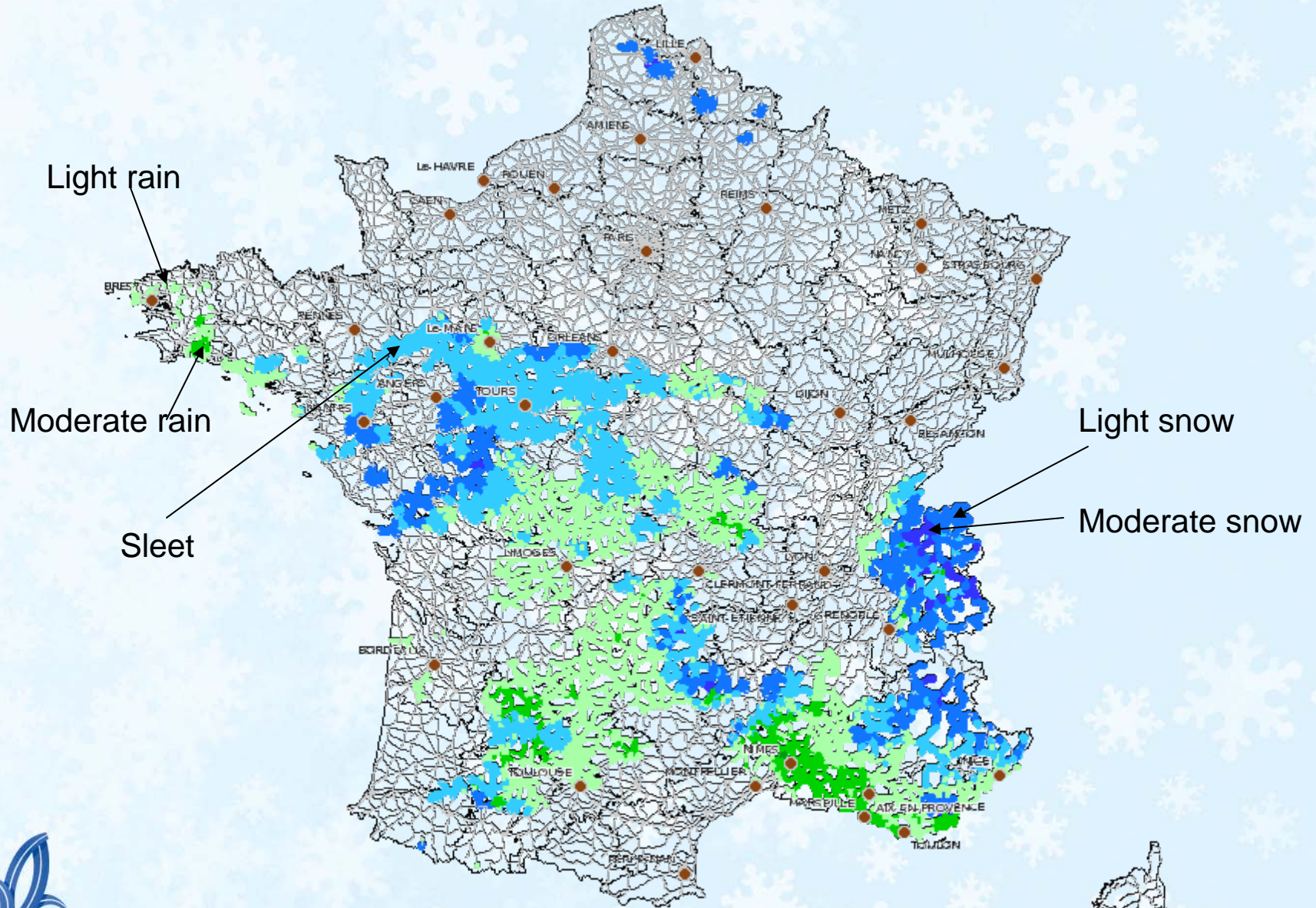


Optima : the treatments

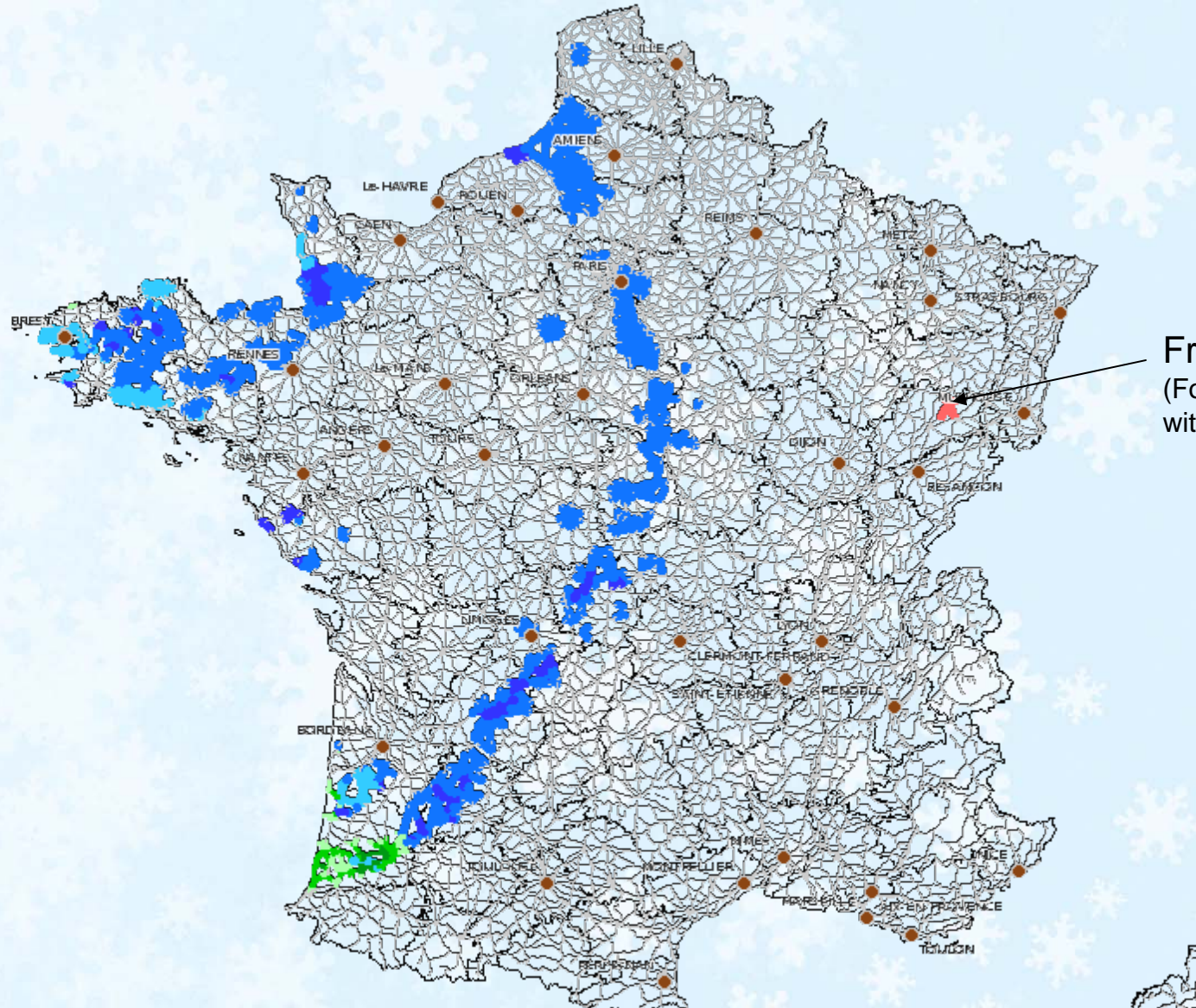
- **First step** : Initialization of the forecasts with the best source of available data :
 - Extrapolated radar data for the precipitations
 - Spécific modelisation for the road surface temperature
 - Meteo-France forecasts data base for the other parameters
- **Second step** : Discrimination between the different types of precipitations:
 - rain and snow according to T_{air}
 - Freezing rain according to the forecasts appraised by forecasters, the occurrence of precipitations and T_{air}
- **Last step** : the updating of the forecasts with available observations
(Spécific algorithms for each parameters)

1. Optima's general presentation
2. [The visualisation of the forecasted parameters](#)
3. The road weather risk interface in Optima
4. The follow-up of a snow event on France
5. Conclusions

Precipitations : 21/12/2009 – 13H10

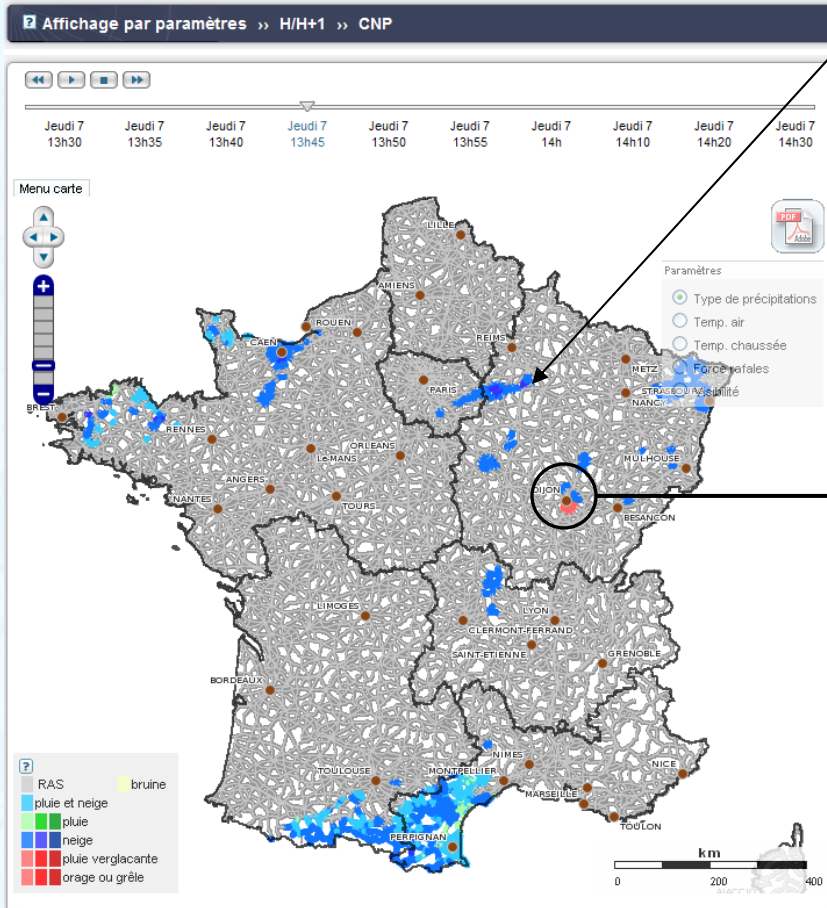


Précipitations : 6/01/2010 – 10H50



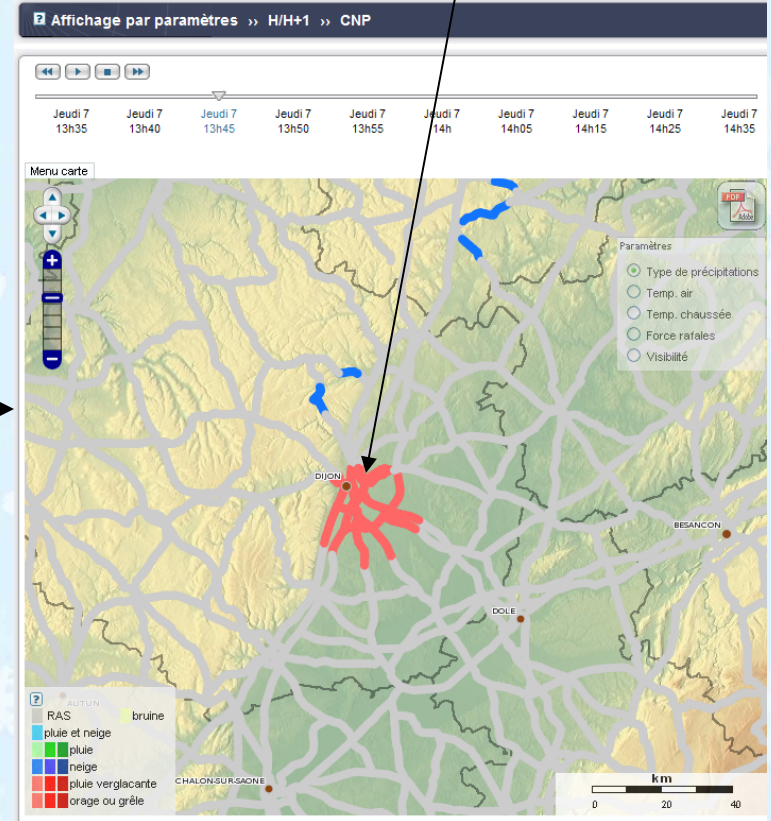
Freezing drizzle
(Forecasts corrected
with an observation)

Precipitations : forecast for the 7/01/2010 at 13H45

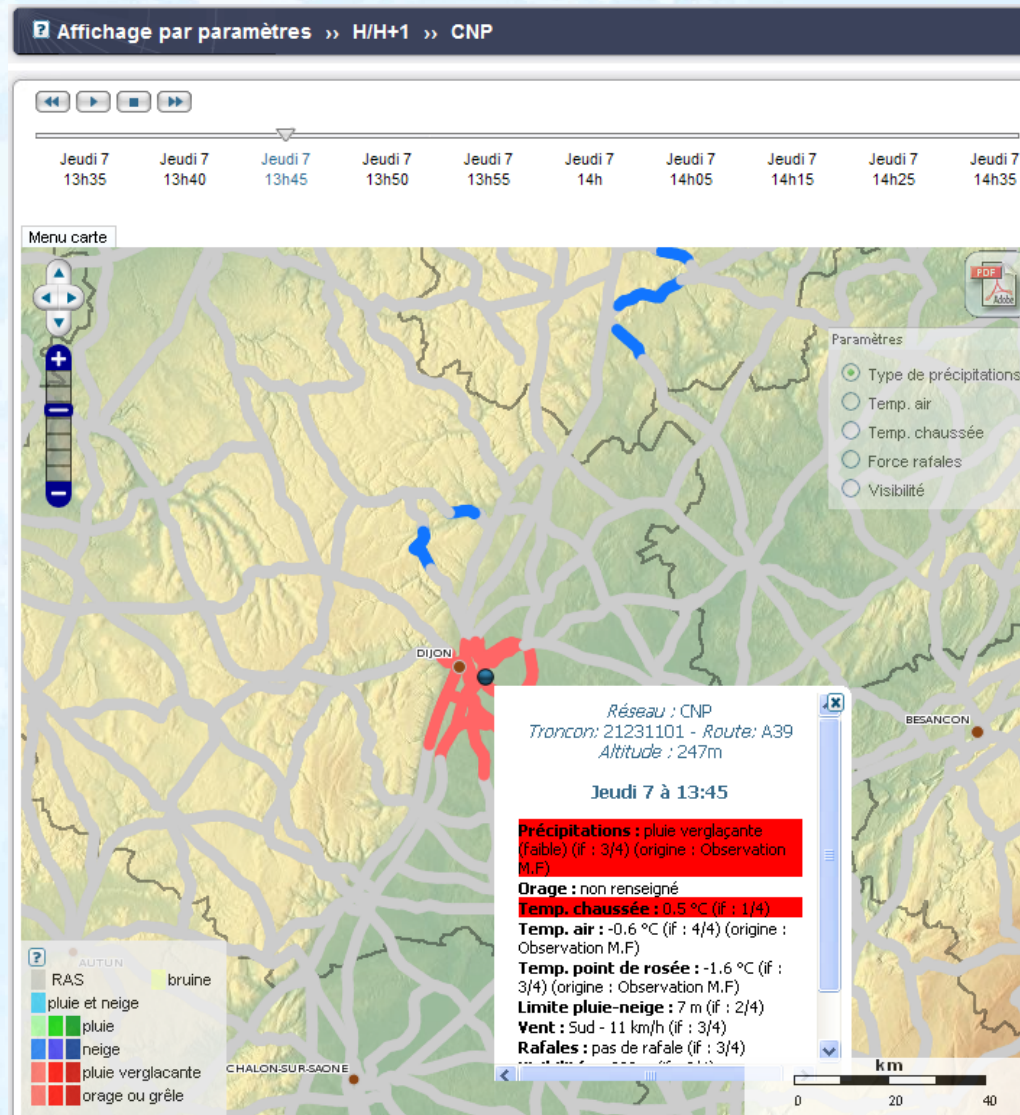


Snow

Freezing rain near Dijon



Freezing rain in Dijon the 07/01/2010 at 13H45



Dijon : forecast between 13H35 and 14H35 the 7th of january 2010

TROICOH II° 21231101

Route : A39 -- Altitude : 247 mètres

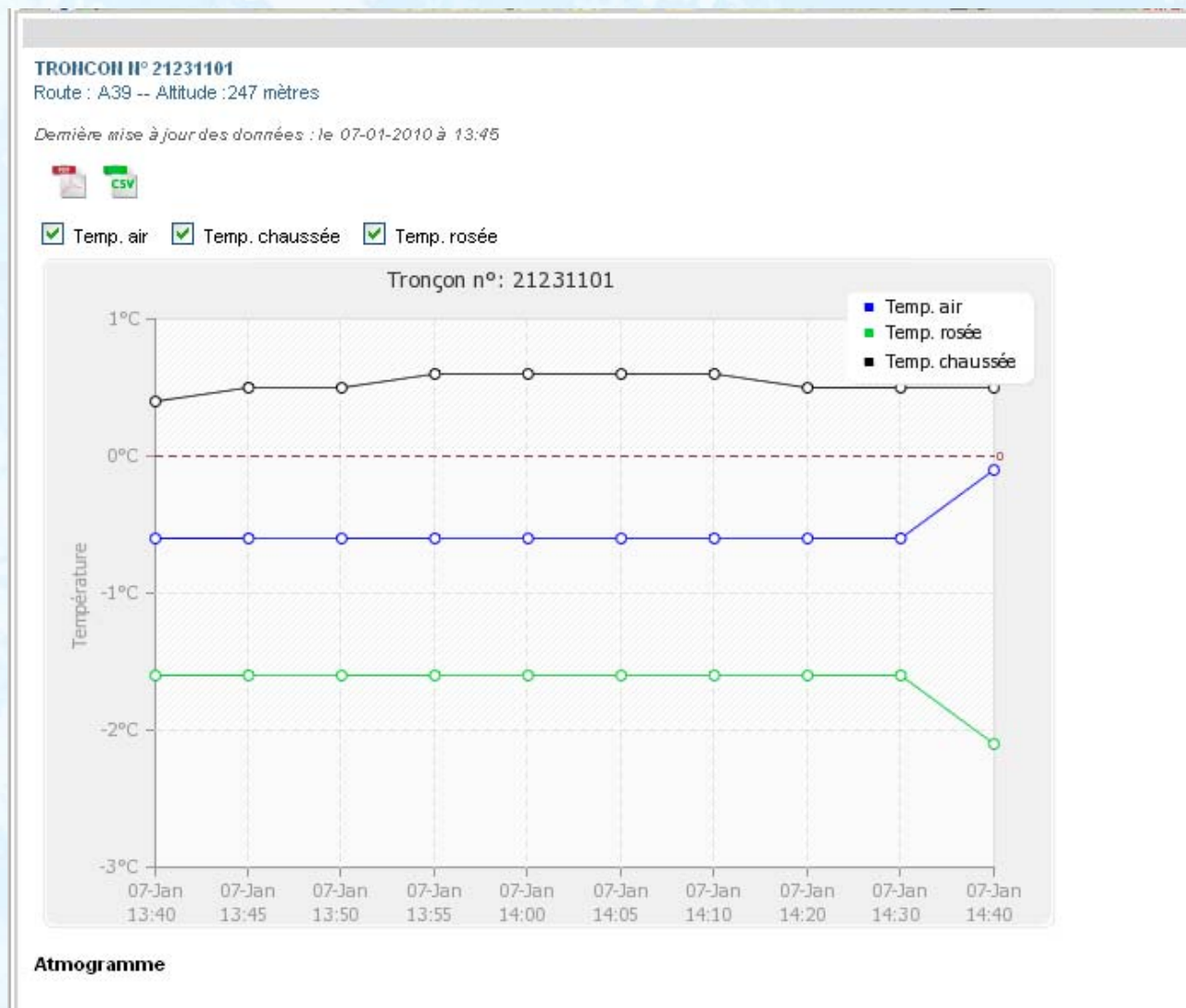
Dernière mise à jour des données : le 07-01-2010 à 13:40



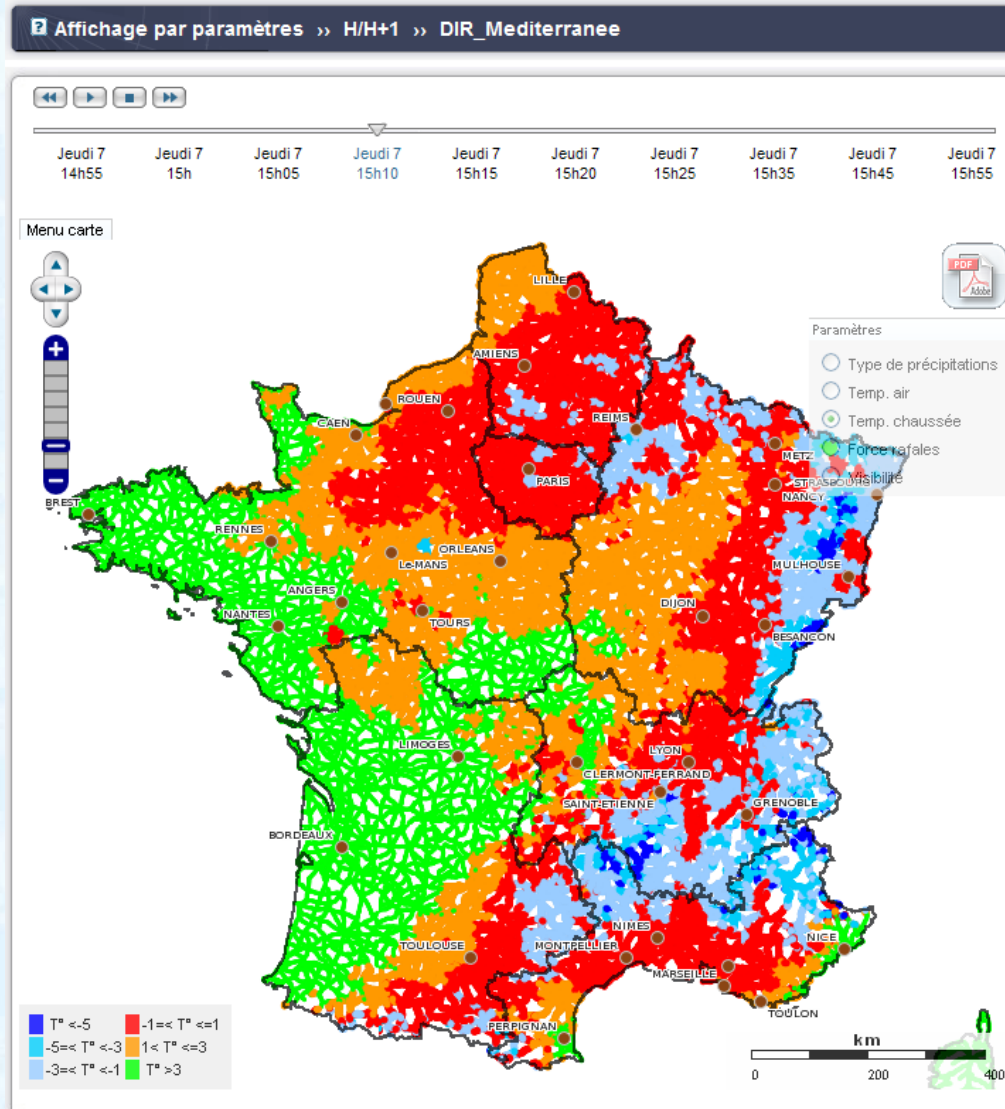
Jeudi 7

	13:35	13:40	13:45	13:50	13:55	14:00	14:05	14:15	14:25	14:35
Précipitations										
Température de chaussée	0.4 °	0.4 °	0.5 °	0.5 °	0.6 °	0.6 °	0.6 °	0.6 °	0.5 °	0.5 °
Température de l'air	-0.6 °	-0.6 °	-0.6 °	-0.6 °	-0.6 °	-0.6 °	-0.6 °	-0.6 °	-0.6 °	-0.1 °
Température point de rosée	-1.6 °	-1.6 °	-1.6 °	-1.6 °	-1.6 °	-1.6 °	-1.6 °	-1.6 °	-1.6 °	-1.9 °
Limite Pluie Neige	7	7	7	7	7	7	7	7	7	82
Vent	Sud - 11 km/h	Sud - 11 km/h	Sud - 11 km/h	Sud - 11 km/h	Sud - 11 km/h	Sud - 11 km/h	Sud - 11 km/h	Sud - 11 km/h	Sud - 11 km/h	Sud - 11 km/h
Rafales	-	-	-	-	-	-	-	-	-	-
Visibilité	>200 m	>200 m	>200 m	>200 m	>200 m	>200 m	>200 m	>200 m	>200 m	>200 m

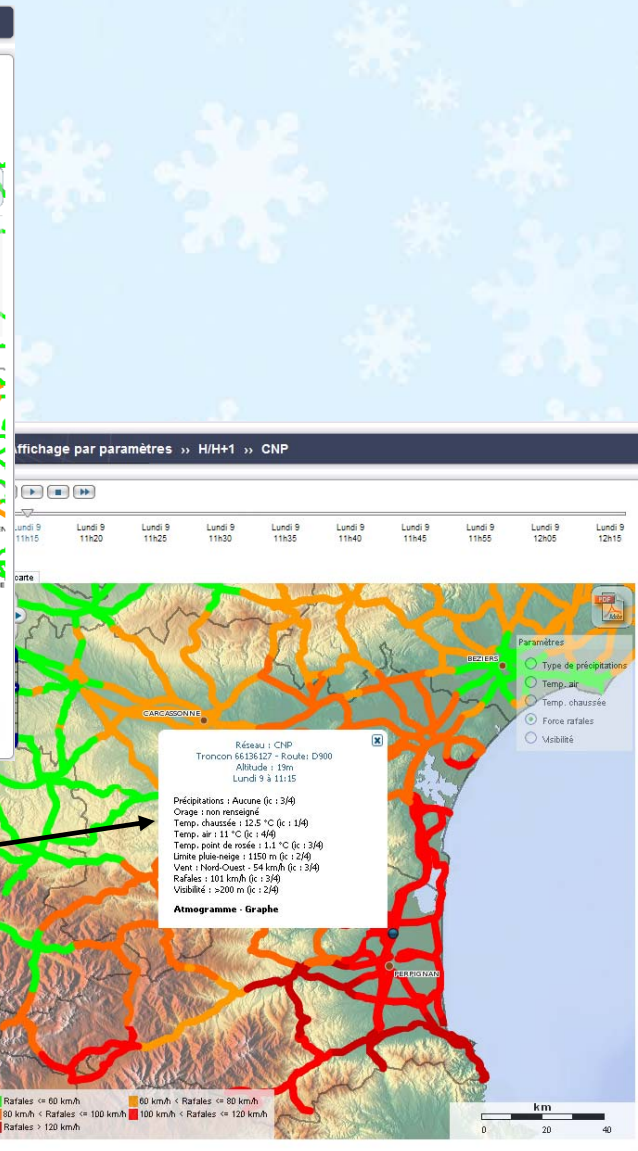
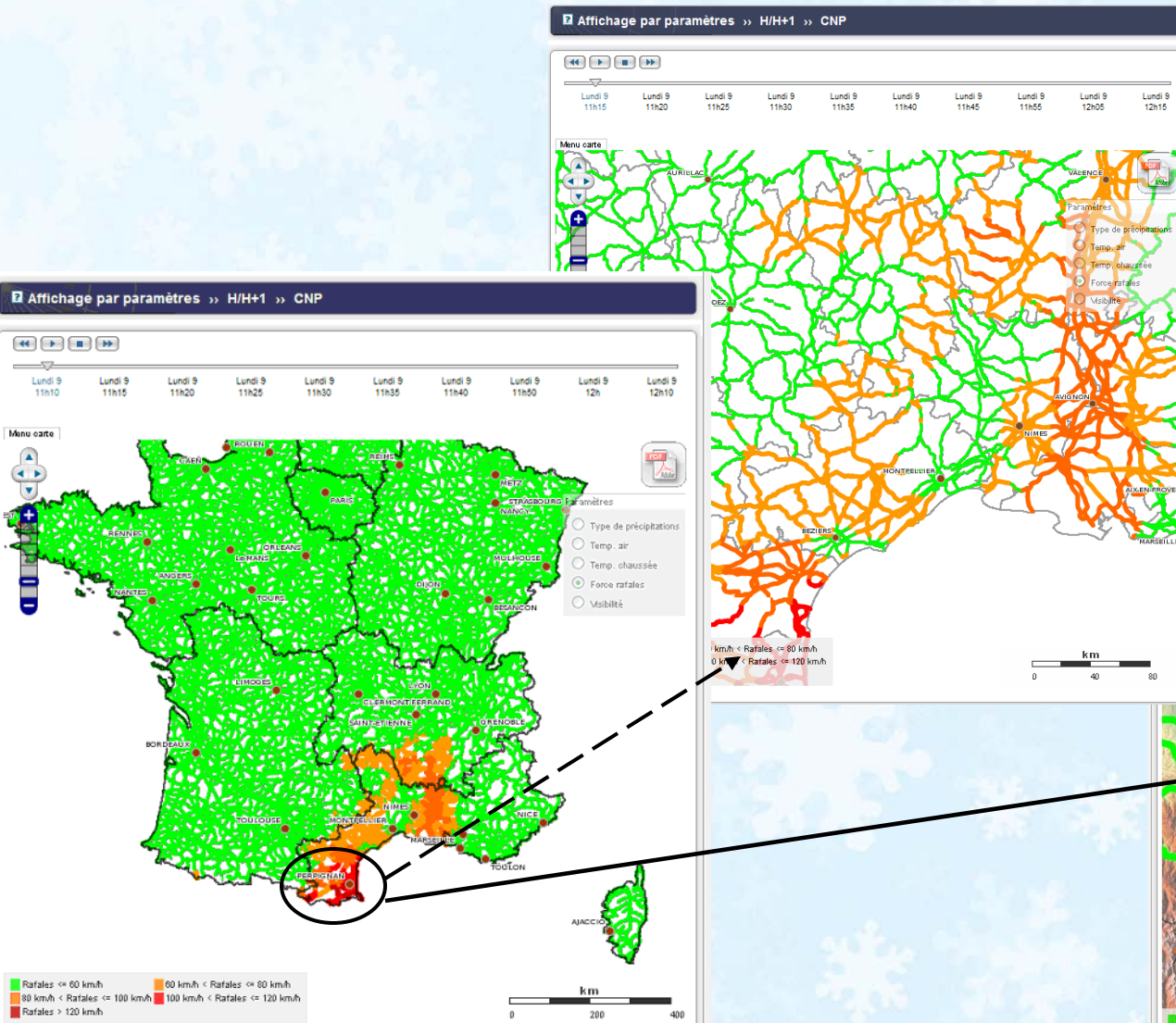
Dijon : graph of temperatures in Dijon between 13H40 and 14H40 on 07/01/2010



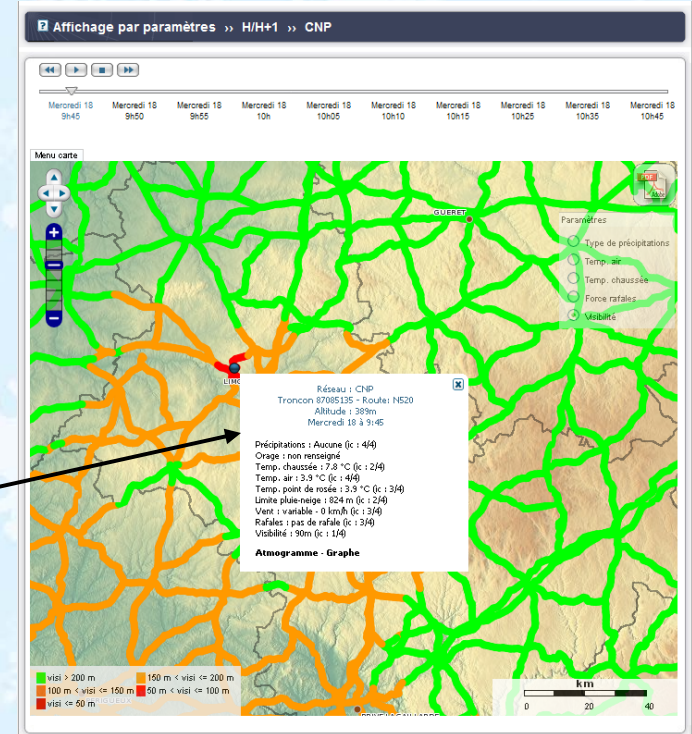
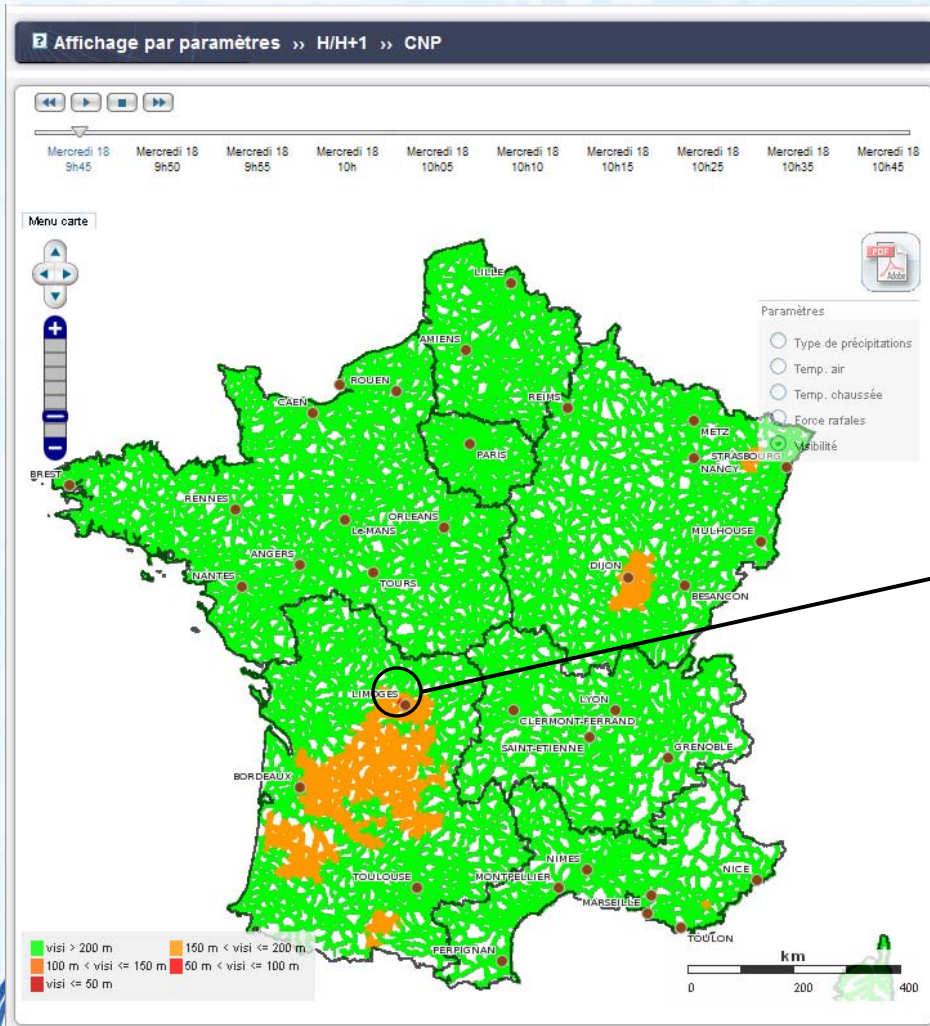
Road surface temperature : the 07/01/2010 at 15H10



Squalls : 101 km/h near Perpignan



Visibility : 90 m near Limoges



1. Optima's general presentation
2. The visualisation of the forecasted parameters
3. [The road weather risk interface in Optima](#)
4. The follow-up of a snow event on France
5. Conclusions

Optima : road weather risk

The alerts for each network

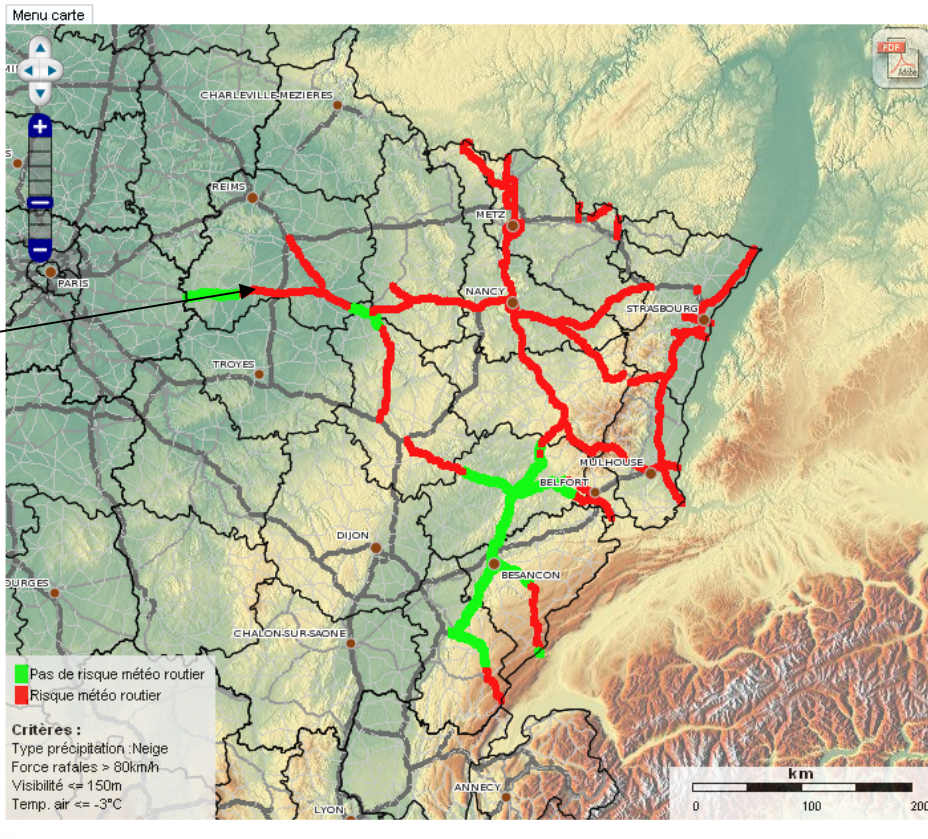
Météo ?

Recette_DirEst 18H45-19H45	District_Metz 18H45-19H45	District_Vitry 18H45-19H45	District_Nancy 18H45-19H45
-------------------------------	------------------------------	-------------------------------	-------------------------------

Affichage des risques » H/H+1 » Recette_DirEst

Navigation icons

Mardi 5 18h45	Mardi 5 18h50	Mardi 5 18h55	Mardi 5 19h	Mardi 5 19h05	Mardi 5 19h10	Mardi 5 19h15	Mardi 5 19h25	Mardi 5 19h35	Mardi 5 19h45
------------------	------------------	------------------	----------------	------------------	------------------	------------------	------------------	------------------	------------------



Optima : definition of the criteria of alert

Configuration des alertes

Recette_DirEst | District_Metz | District_Vitry | District_Nancy | District_Strasbourg | District_Mulhouse | District_Remiremont | District_Besancon

Recette_DirEst :

Ajouter un critère : Temp. air - temp. rosée <= 1°C

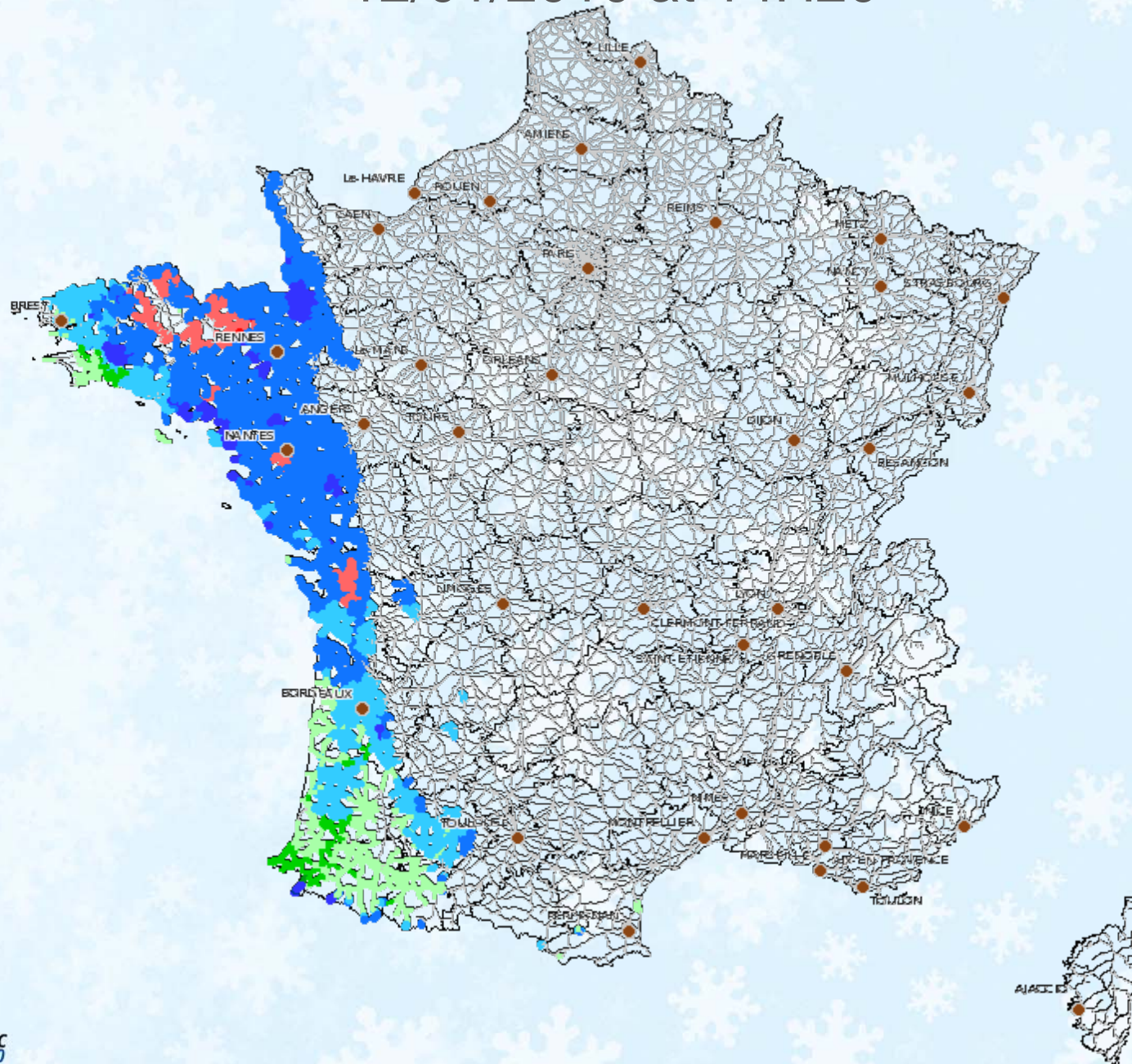
<input type="checkbox"/> ou Rafales de vent supérieures à (km/h)	<input type="text" value="80"/>
<input type="checkbox"/> ou Visibilité (m) inférieure ou égale à	<input type="text" value="150"/>
<input type="checkbox"/> ou Température surface chaussée (°C) :	<input type="text" value="<="/> <input type="button" value="v"/> <input type="text" value="2"/> <input type="text"/>
<input type="checkbox"/> ou Type de précipitation :	<input type="text" value="Neige"/> <input type="button" value="v"/> et intensité <input type="text" value="Modérée"/> <input type="button" value="v"/>
<input type="checkbox"/> ou Temp. air - temp. rosée <= 1°C	

The road manager define his own criteria of alert

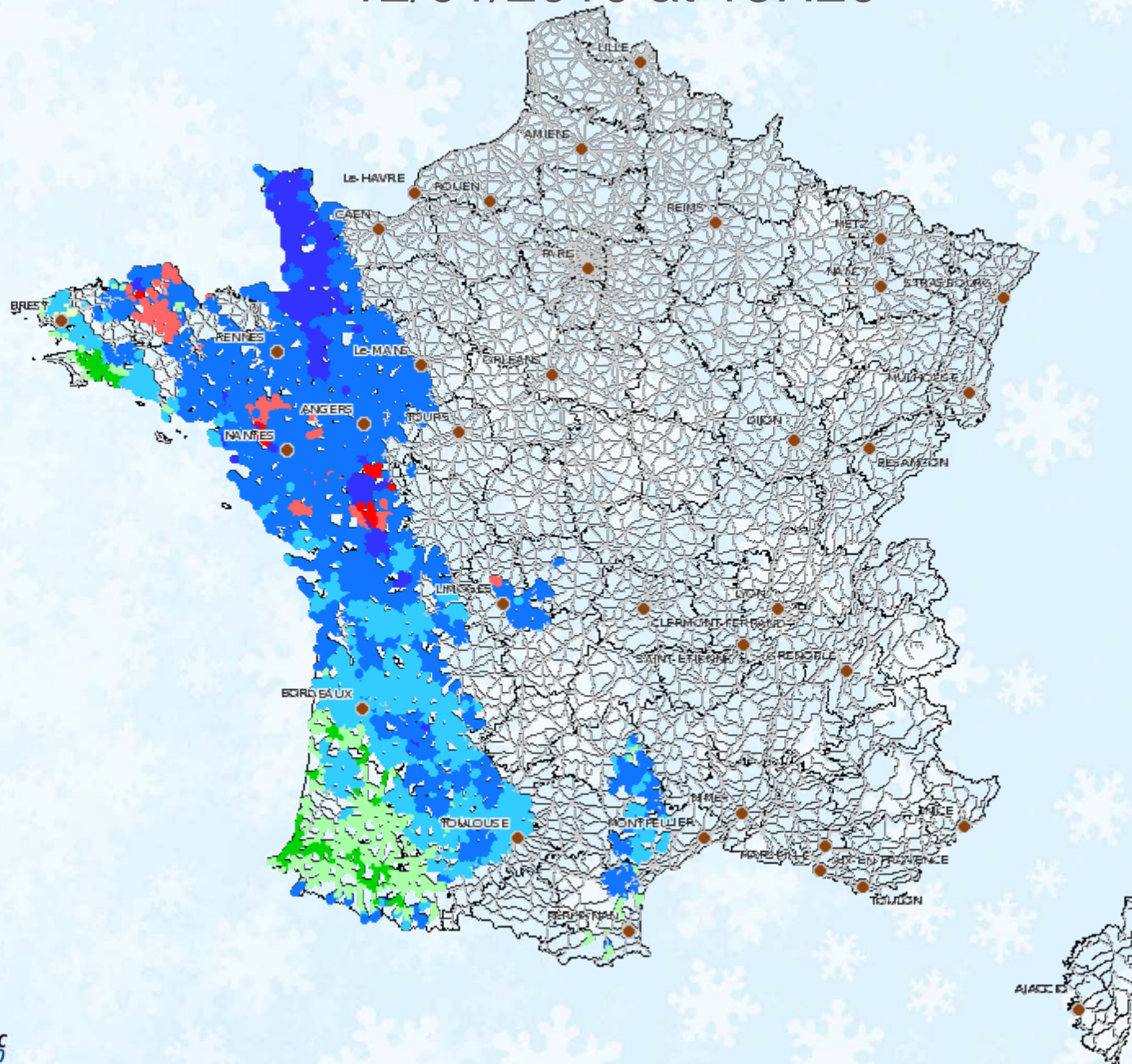
1. Optima's general presentation
2. The visualisation of the forecasted parameters
3. The road weather risk interface in Optima
4. [The follow-up of a snow event on France](#)
5. Conclusions

The follow-up of a snow event on France January 12 and 13th, 2010

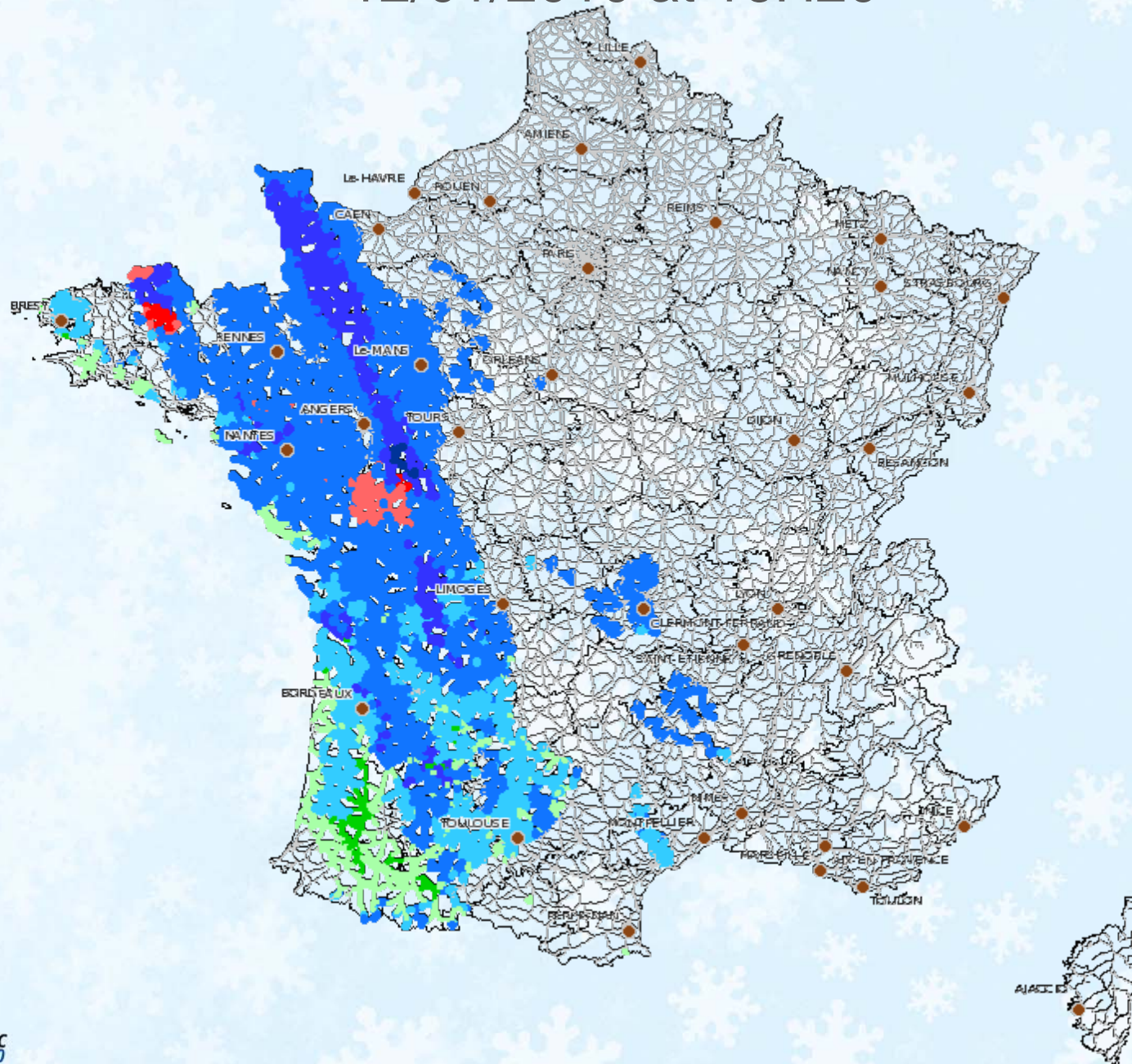
12/01/2010 at 14H20



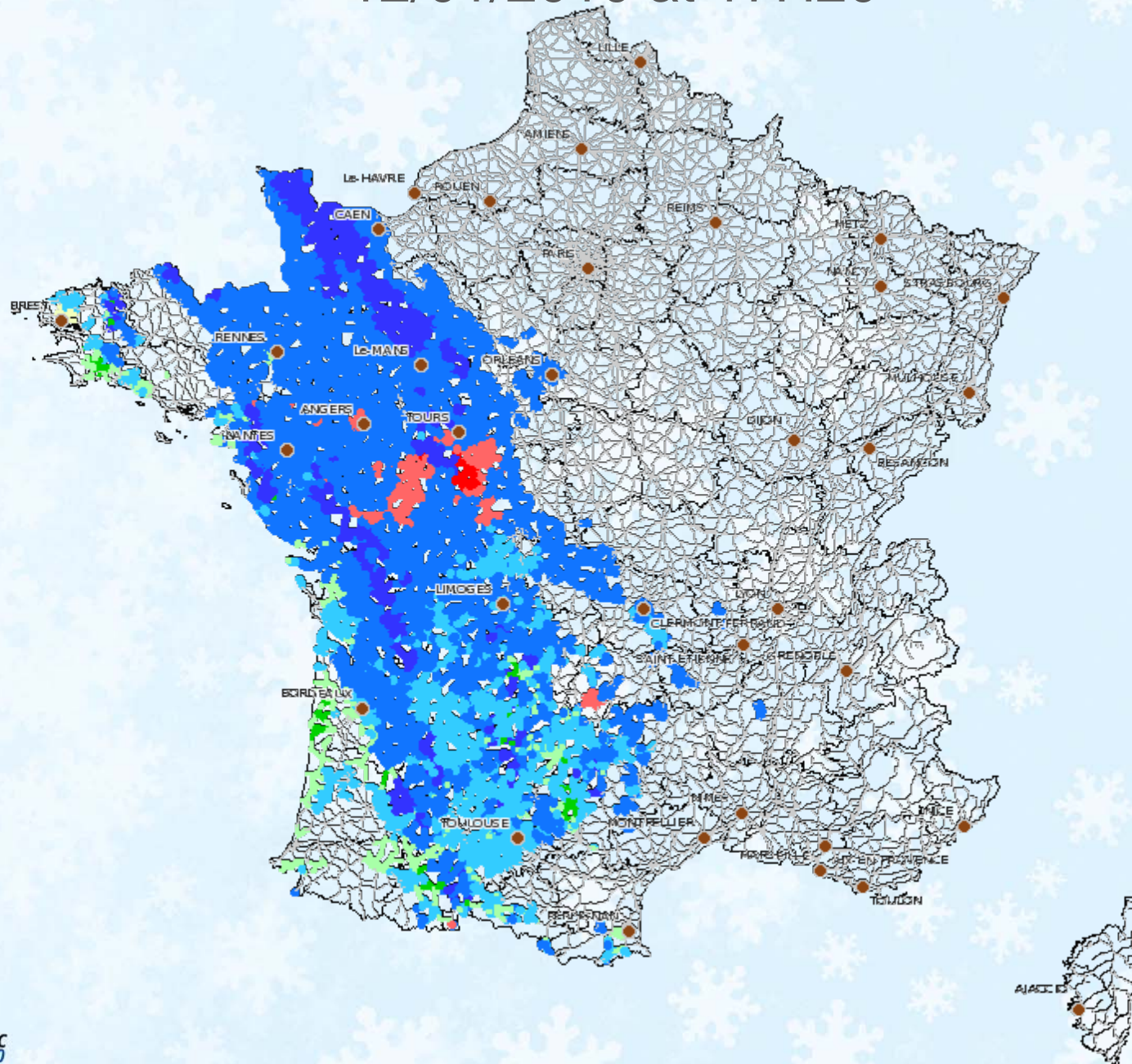
12/01/2010 at 15H20



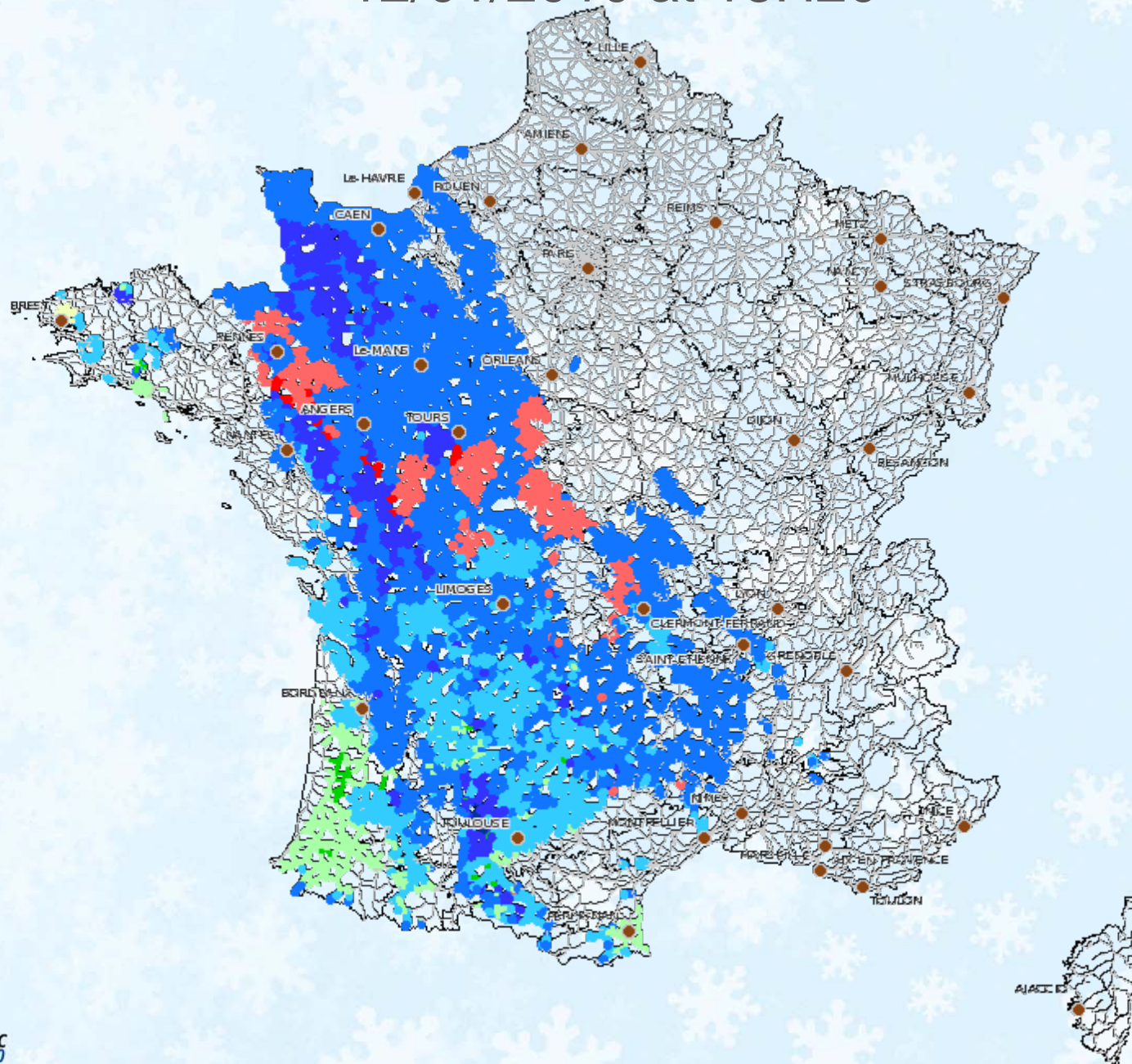
12/01/2010 at 16H20



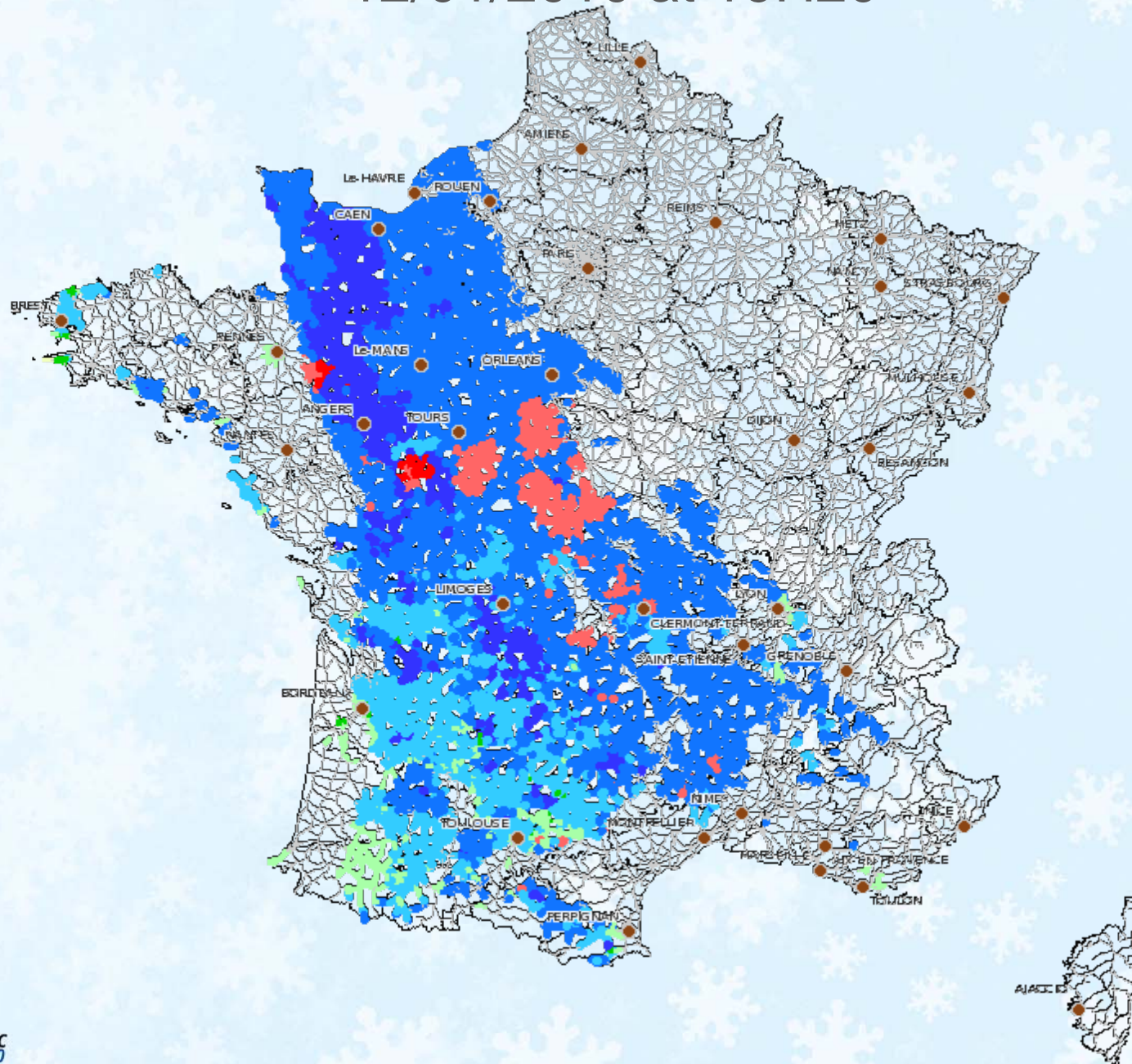
12/01/2010 at 17H20



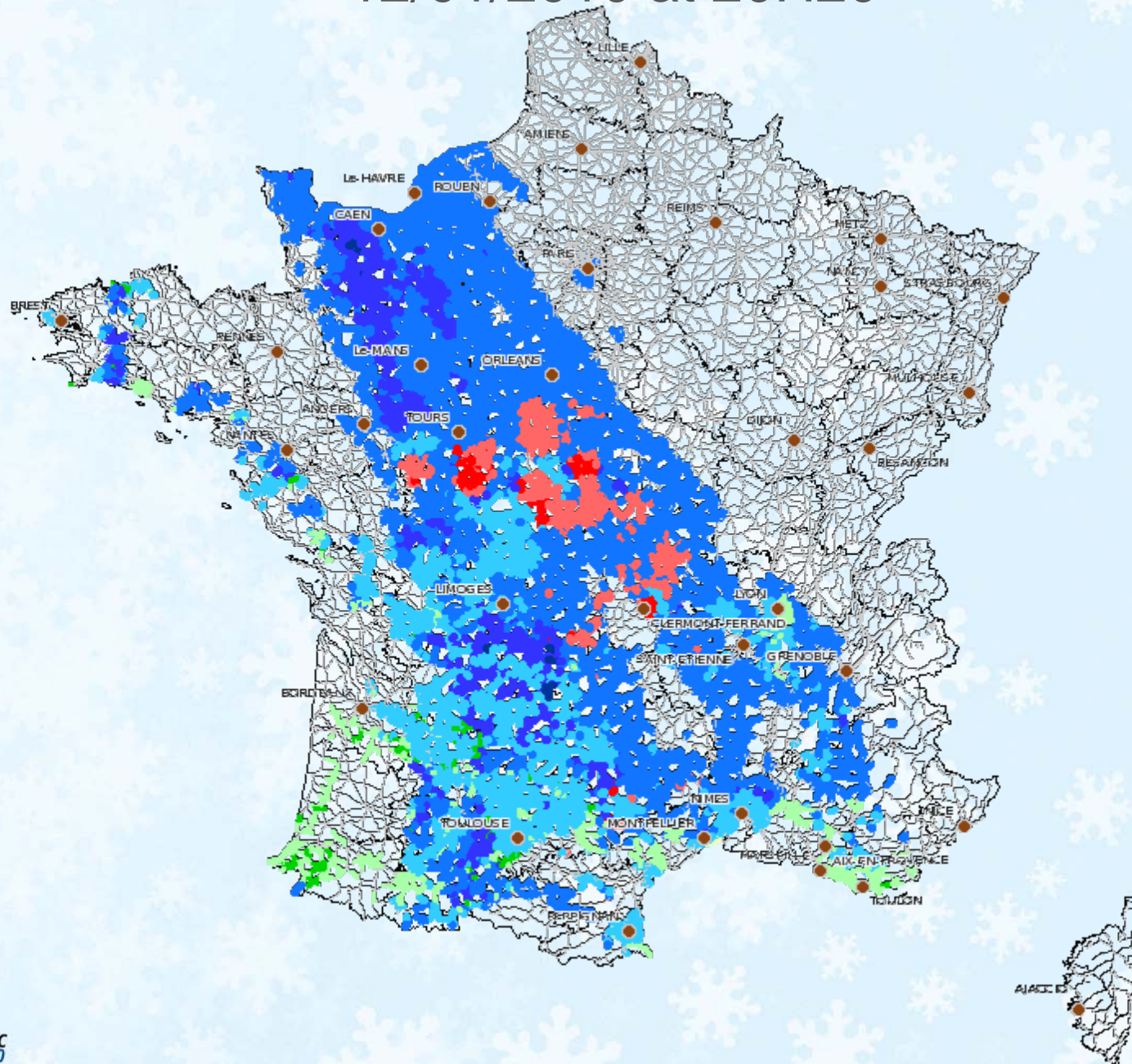
12/01/2010 at 18H20



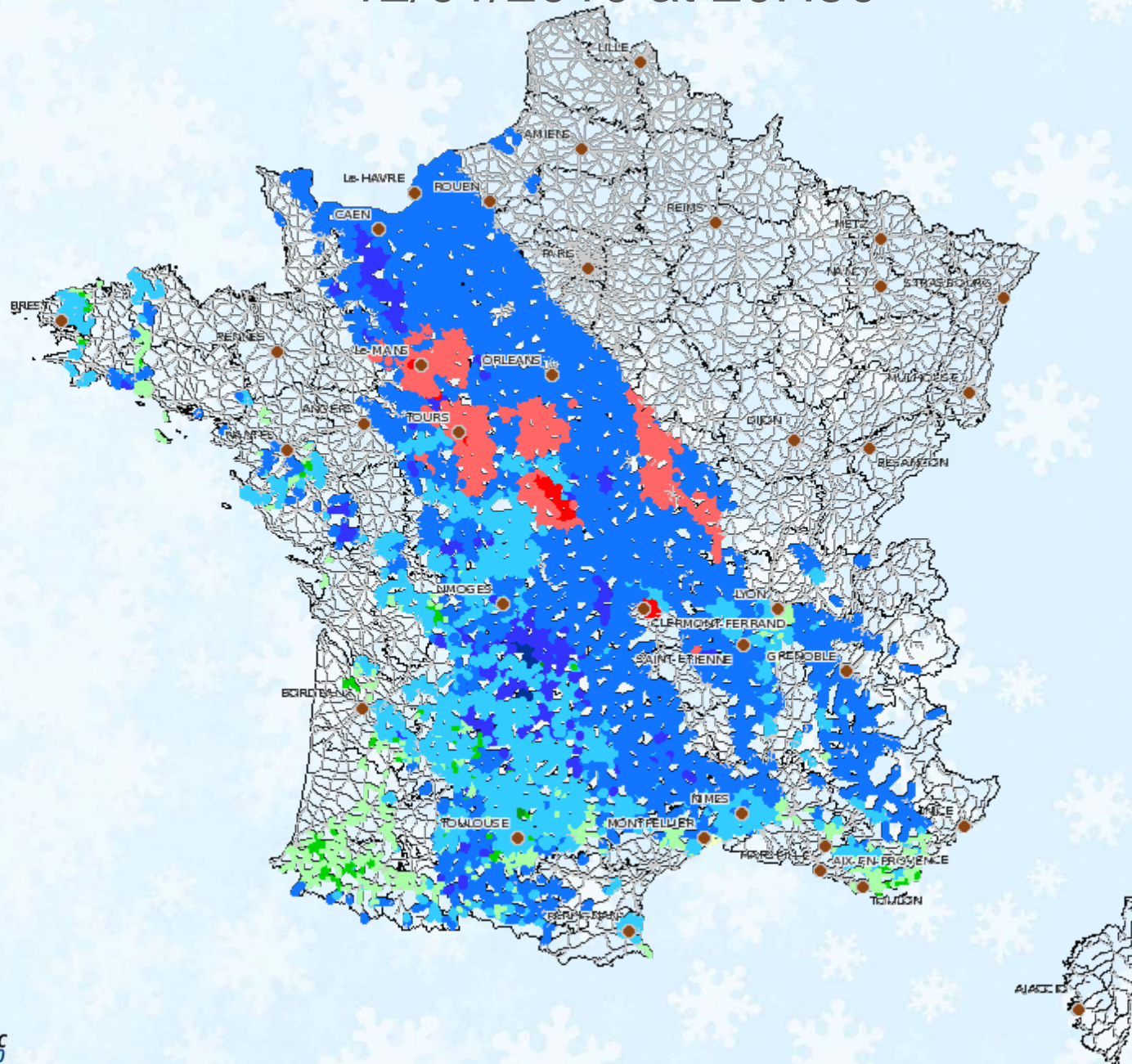
12/01/2010 at 19H20



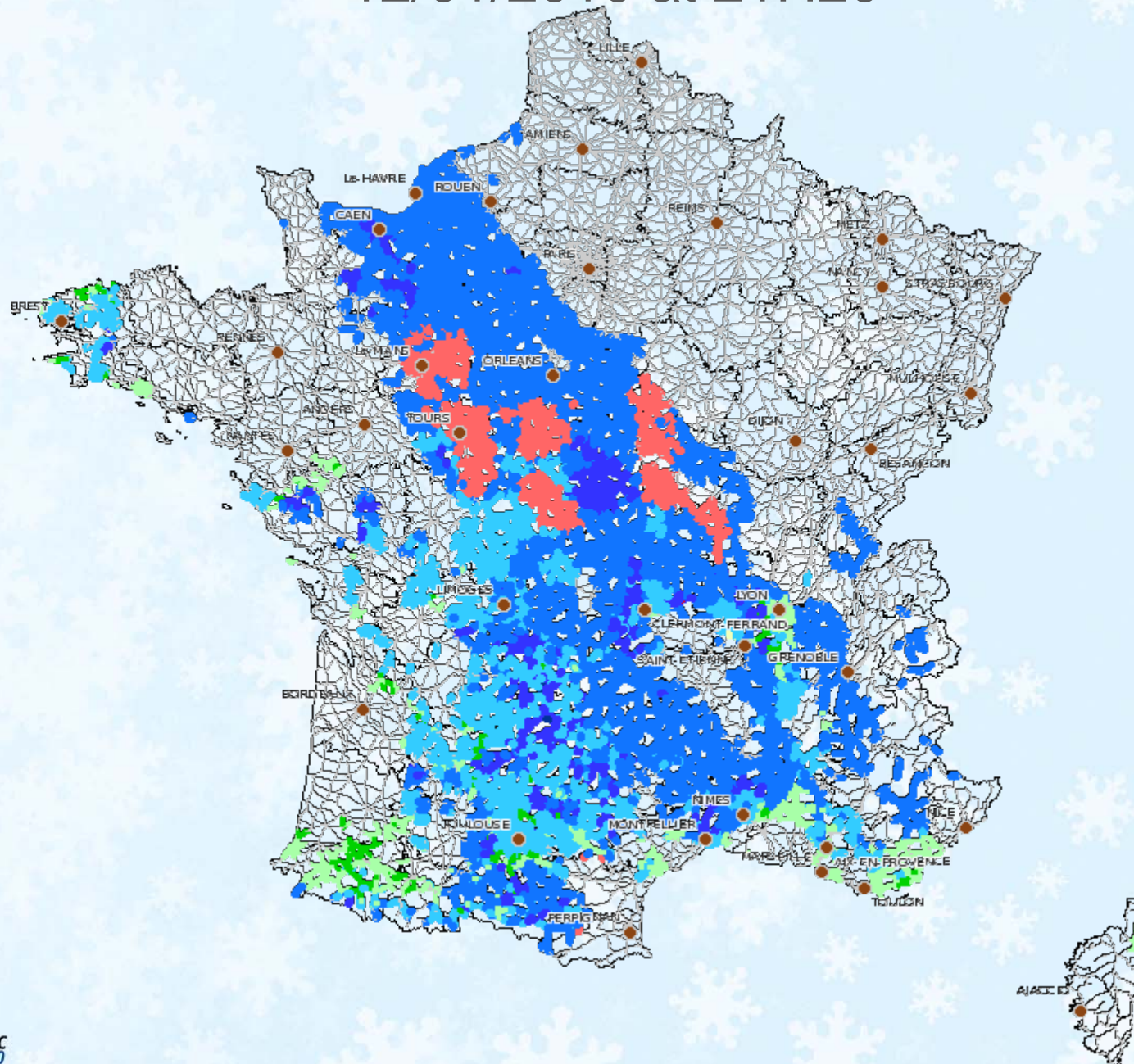
12/01/2010 at 20H20



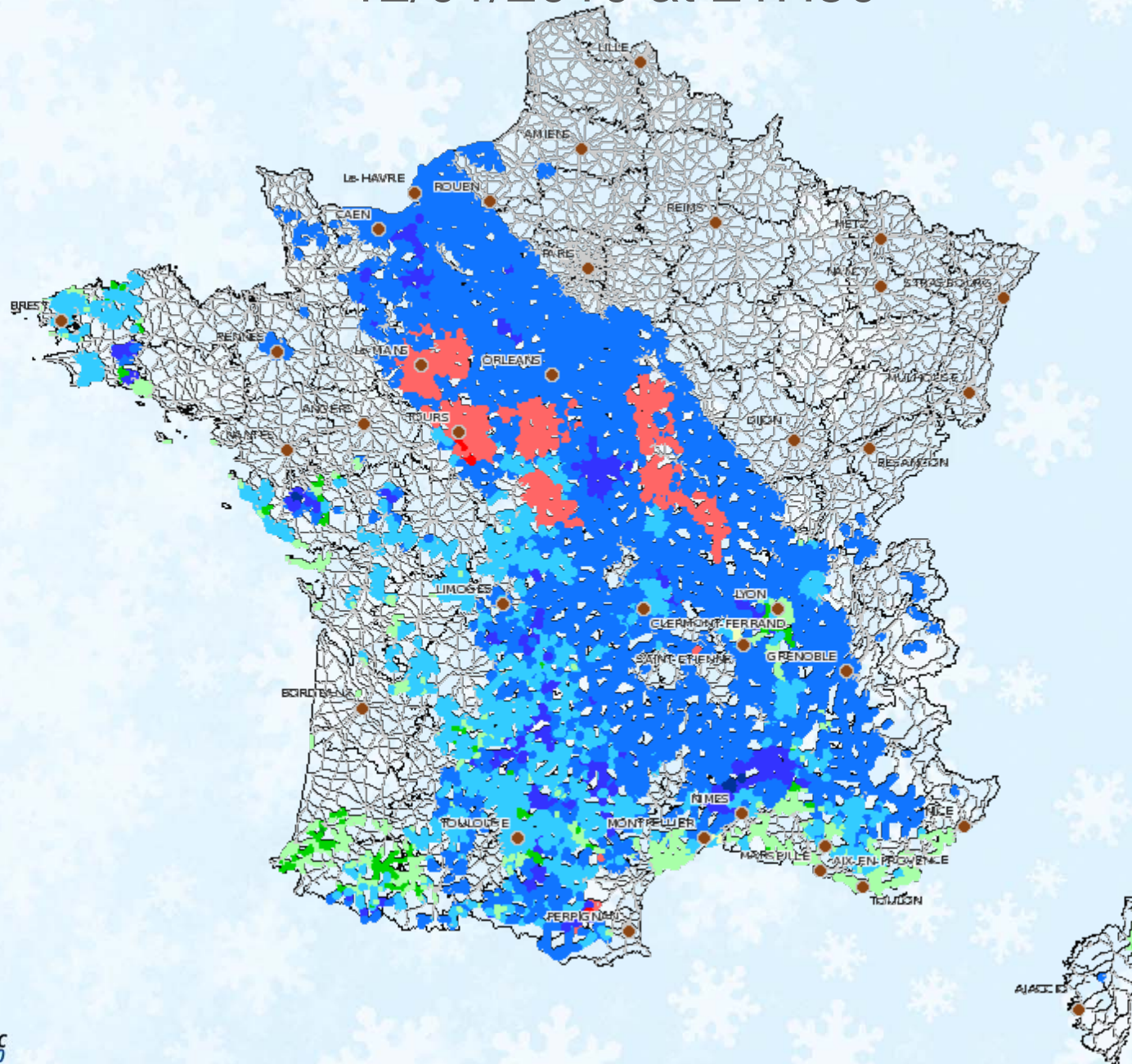
12/01/2010 at 20H50



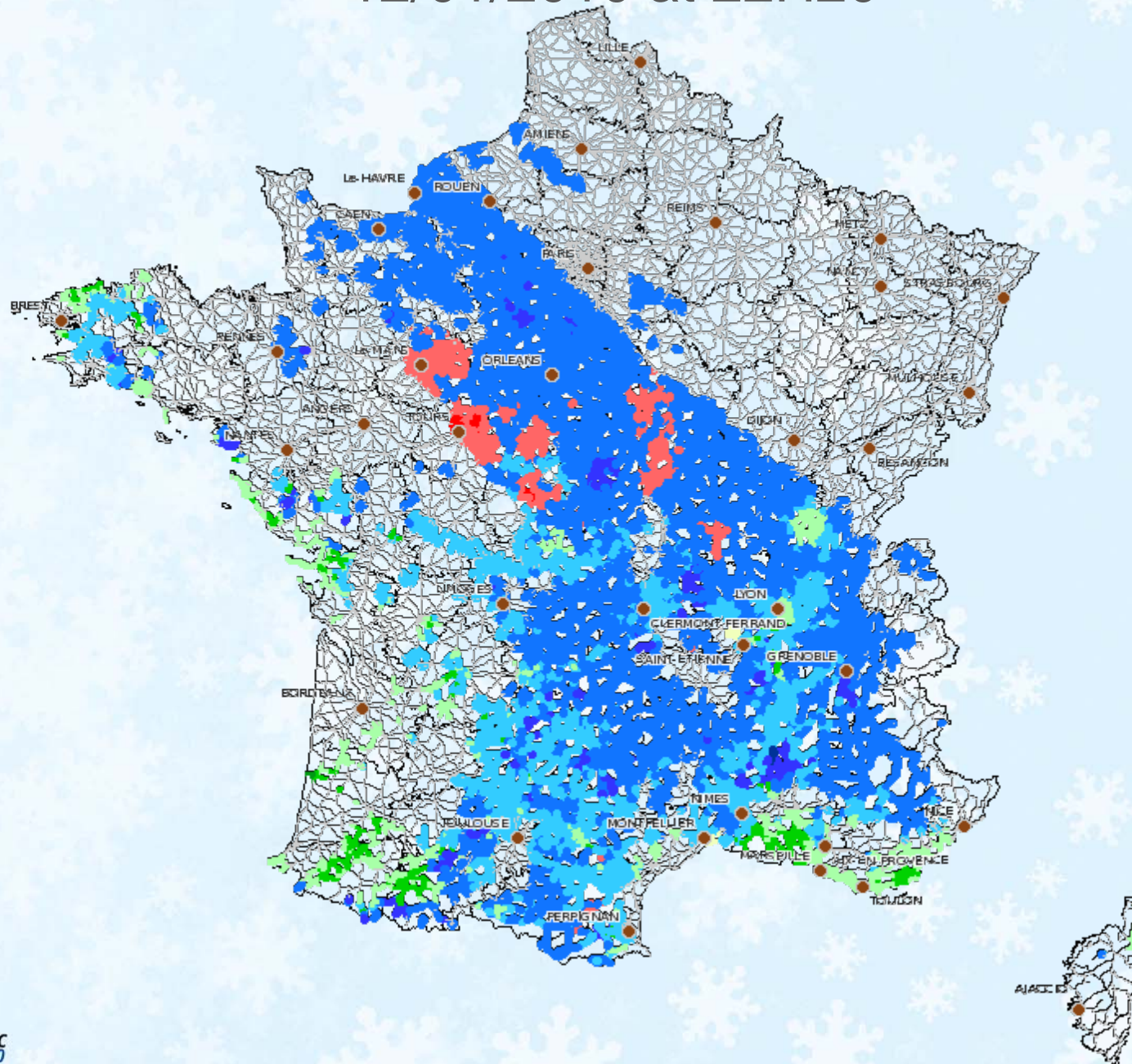
12/01/2010 at 21H20



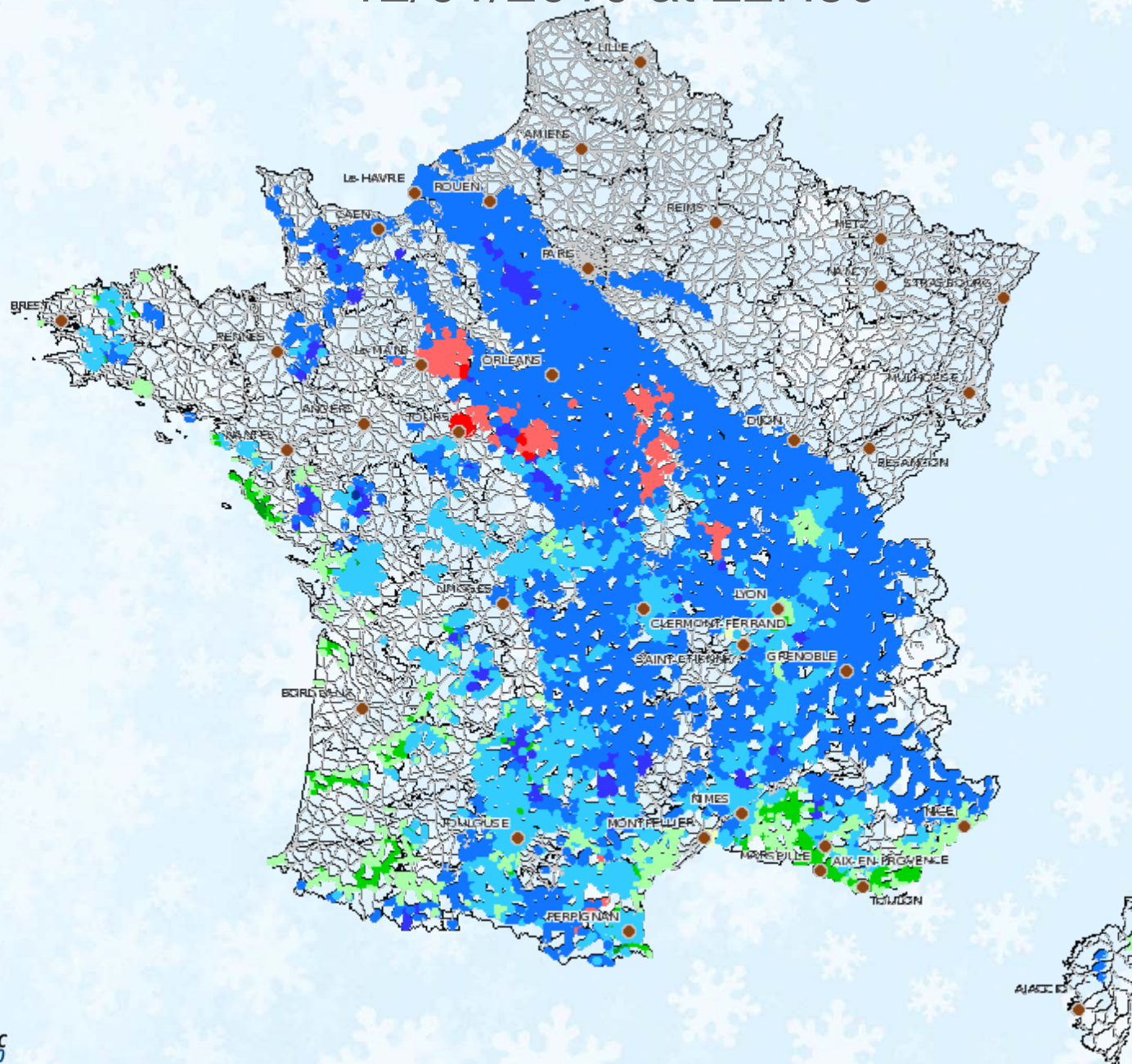
12/01/2010 at 21H50



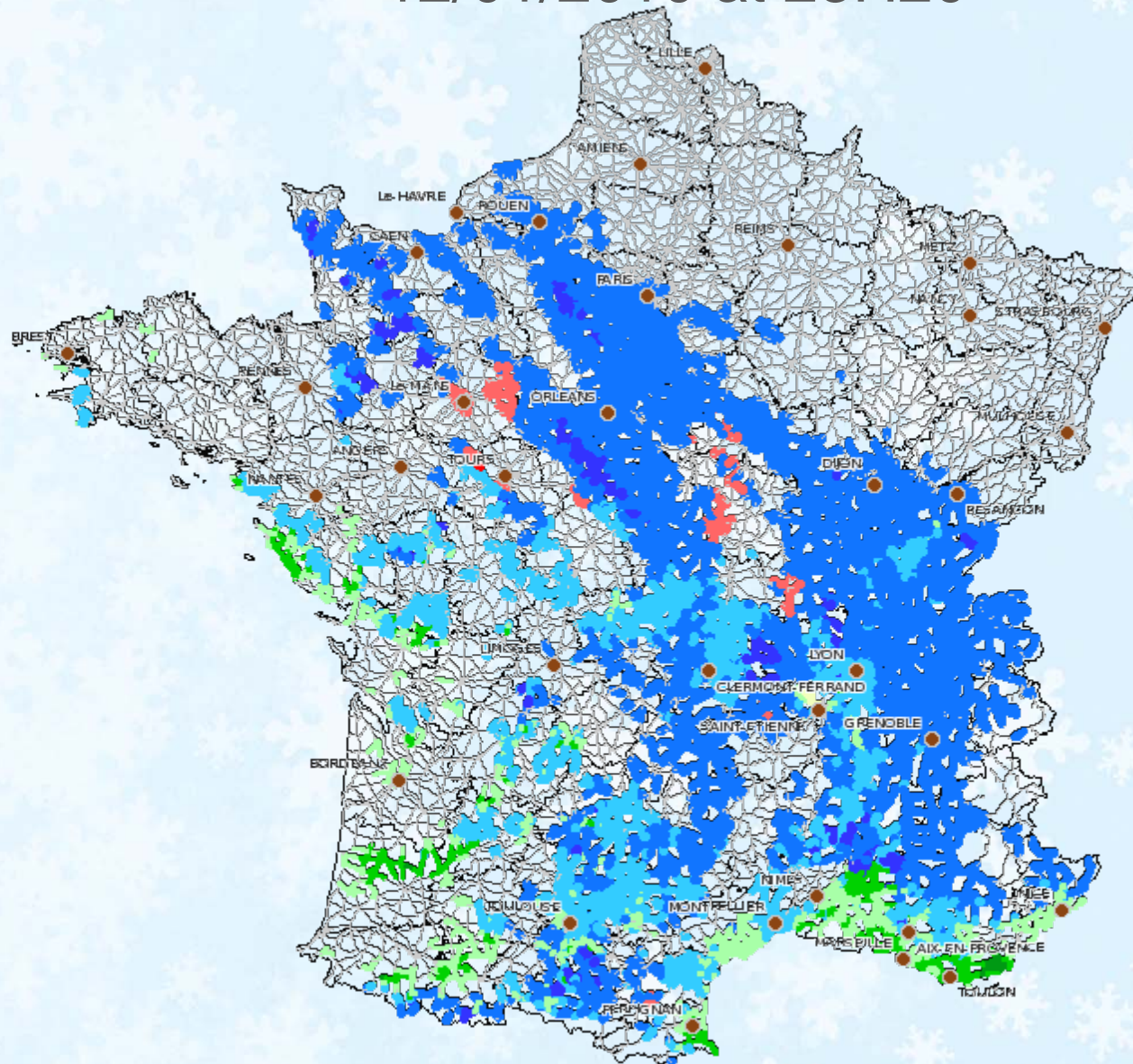
12/01/2010 at 22H20



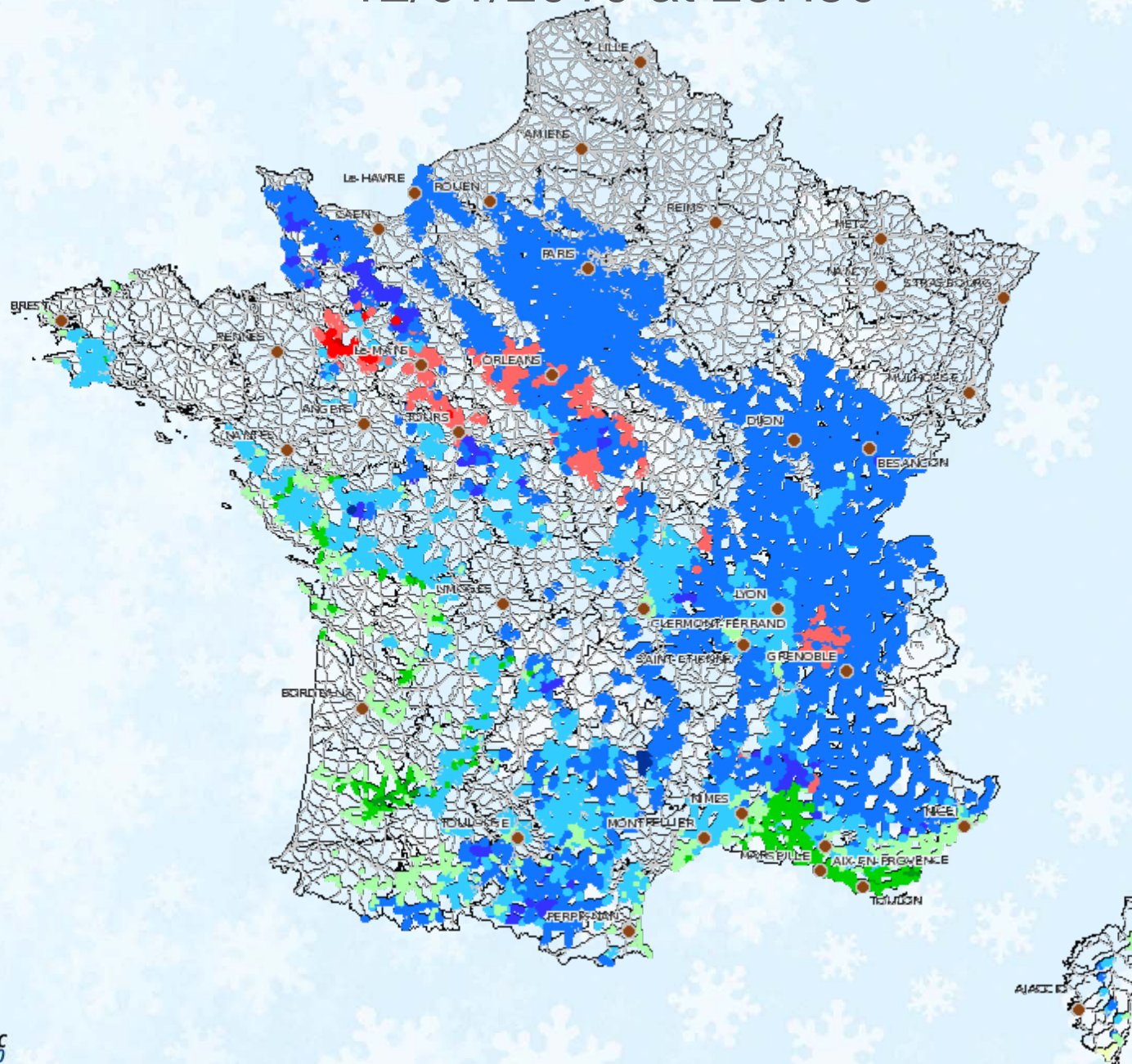
12/01/2010 at 22H50



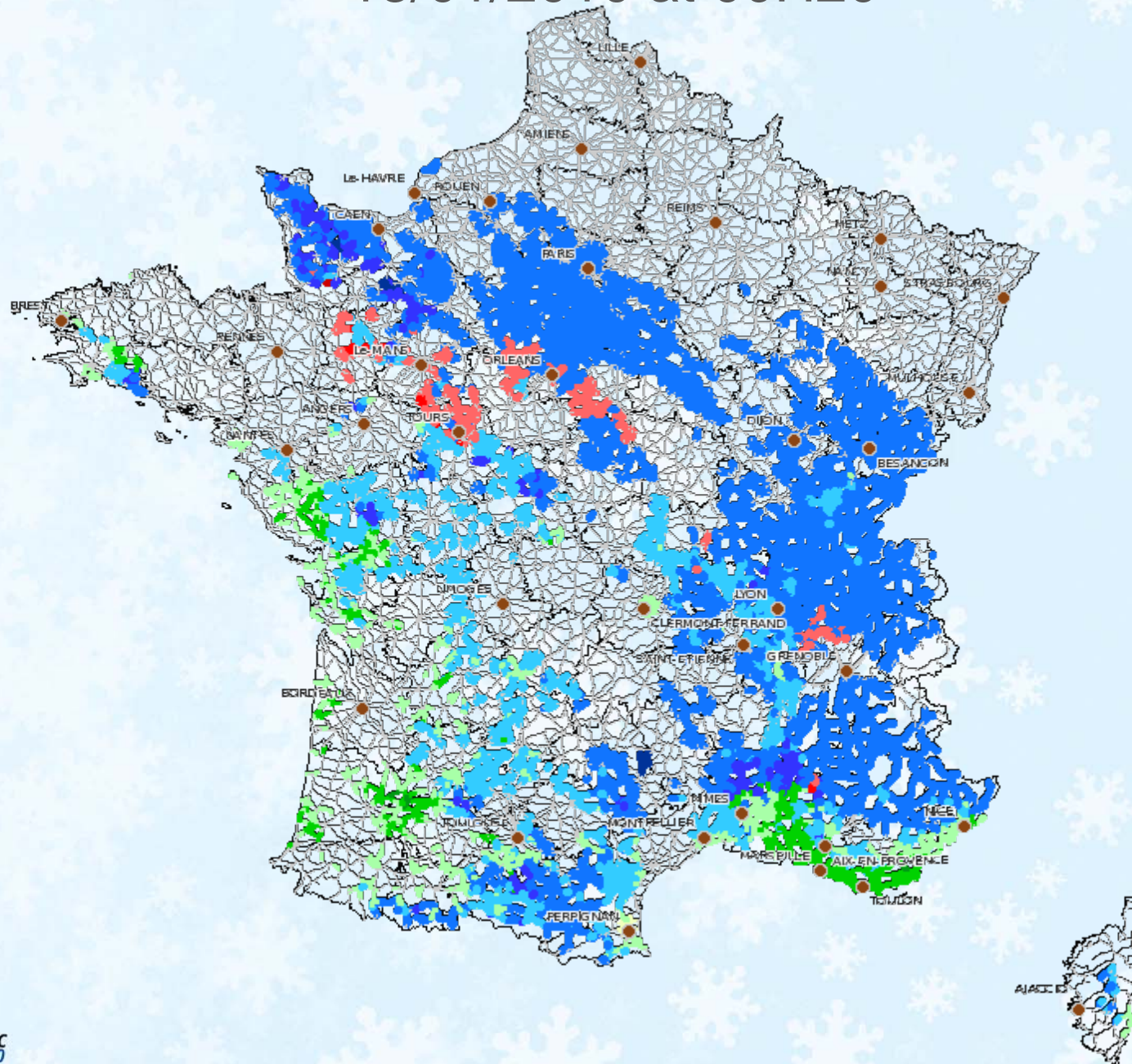
12/01/2010 at 23H20



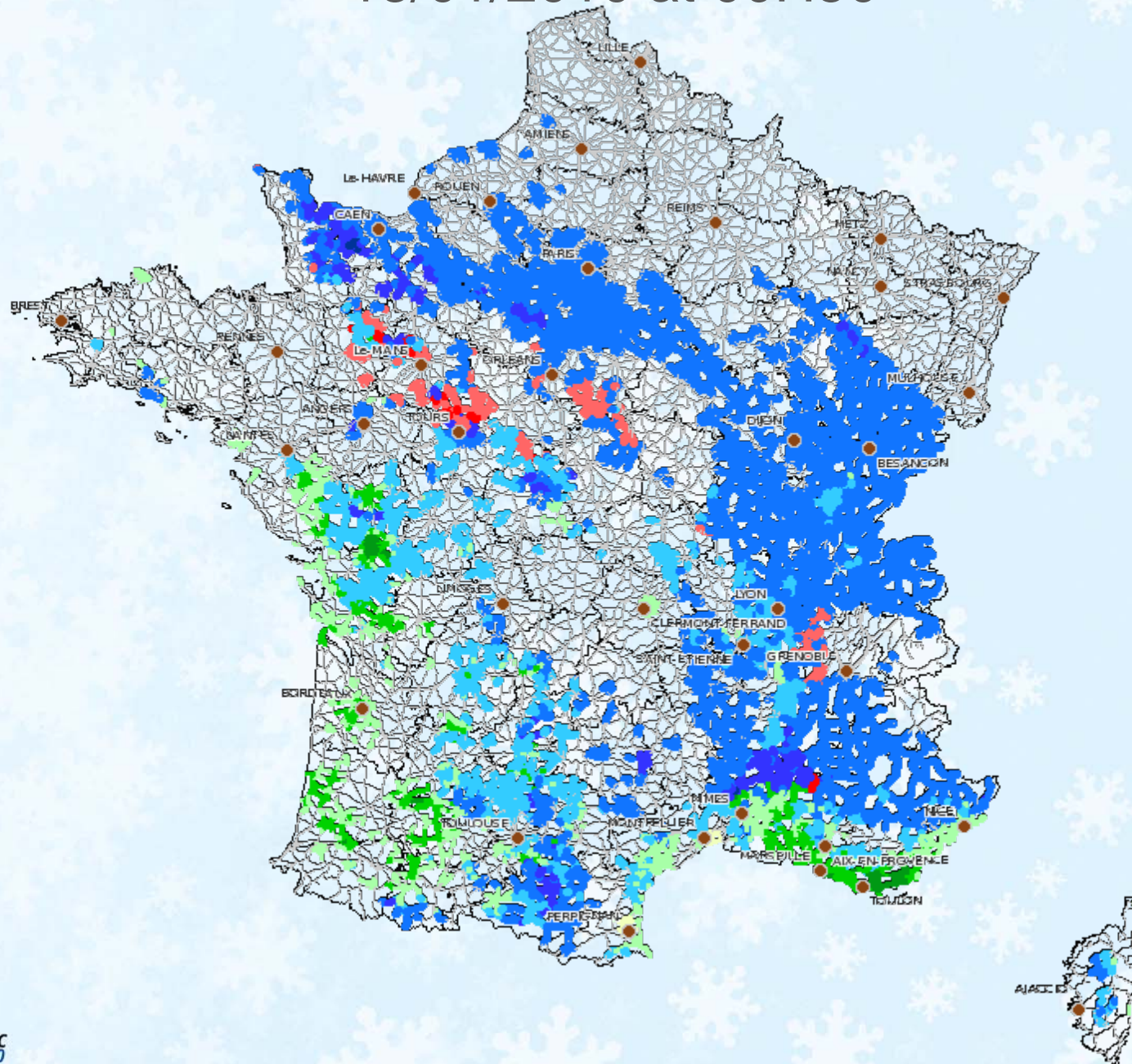
12/01/2010 at 23H50



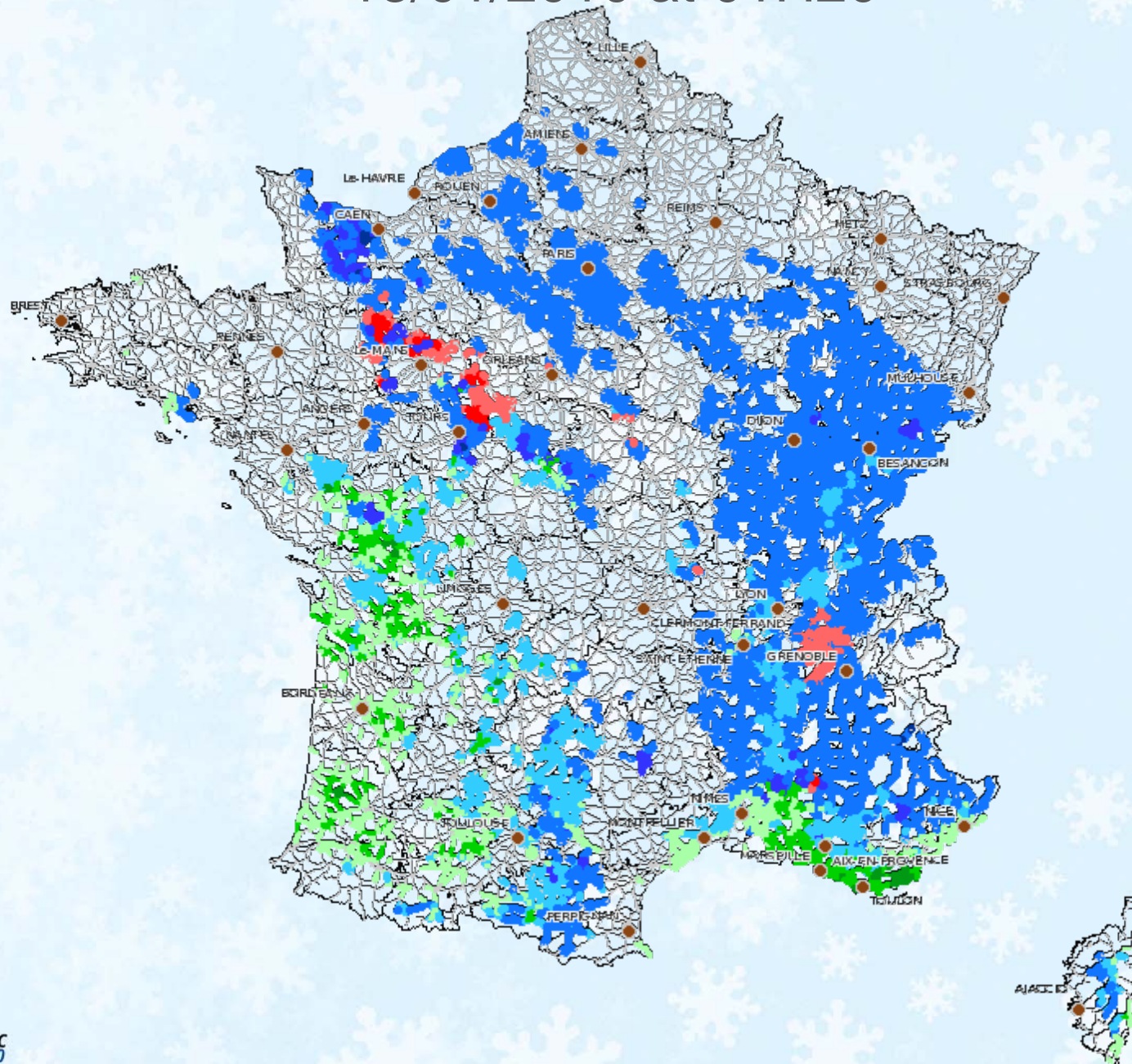
13/01/2010 at 00H20



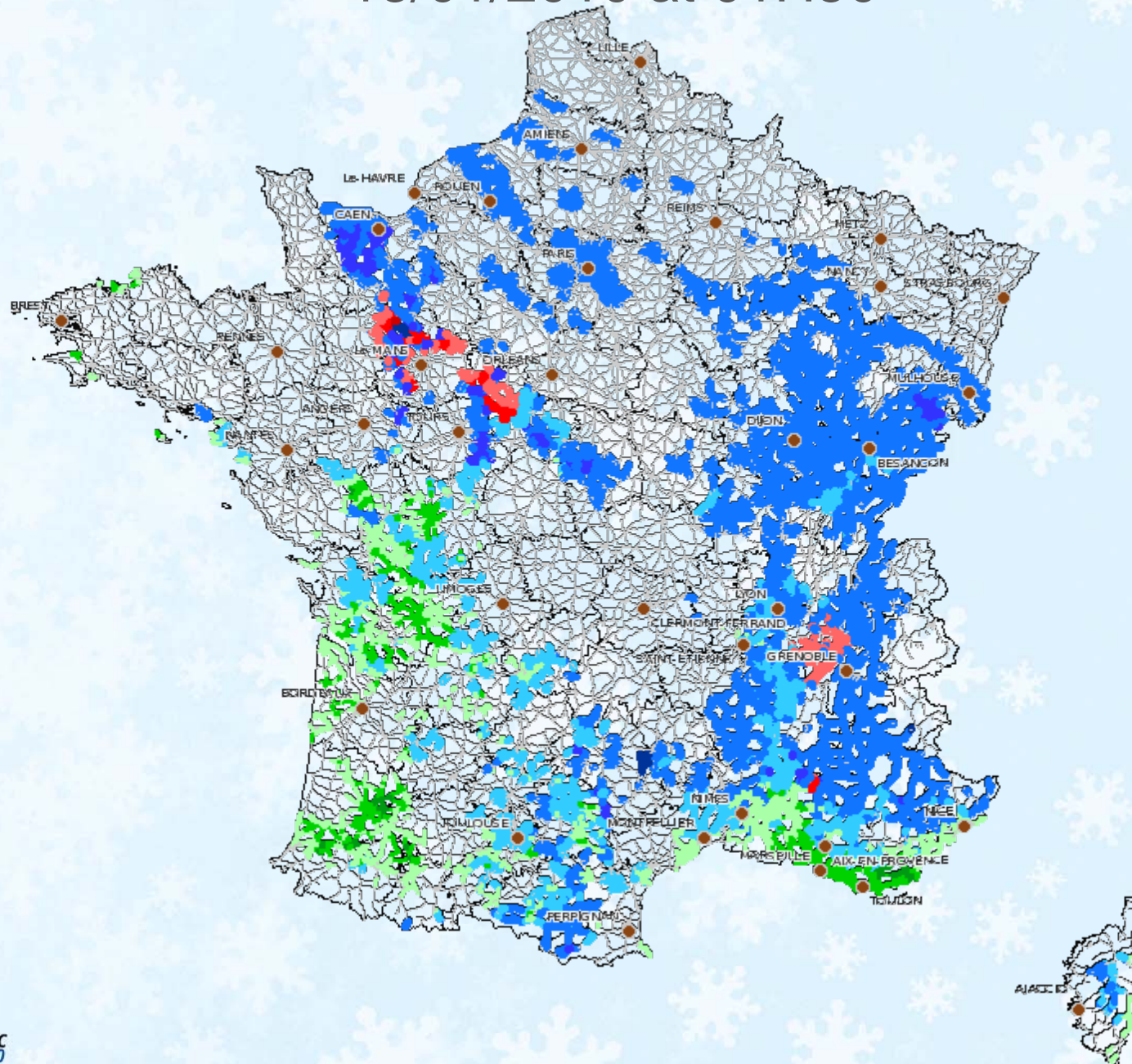
13/01/2010 at 00H50



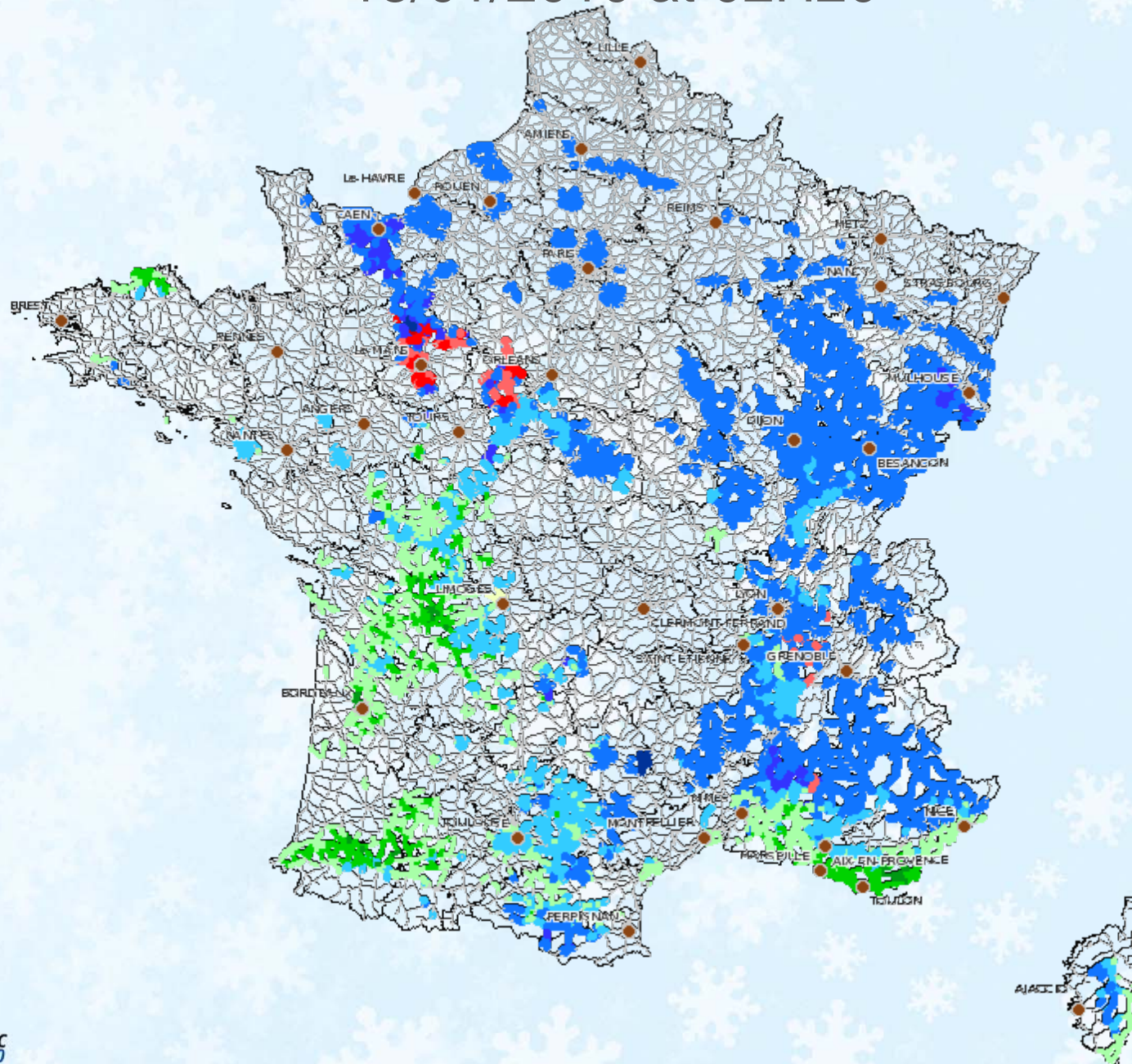
13/01/2010 at 01H20



13/01/2010 at 01H50



13/01/2010 at 02H20



1. Optima's general presentation
2. The visualisation of the forecasted parameters
3. The road weather risk interface in Optima
4. The follow-up of a snow event on France
5. [Conclusions](#)

Optima : conclusions

- 2008 : development of the treatments
- Winter 2008-2009 : evaluation
- 2009 : Production on dedicated extranets for road managers
- Winter 2009-2010 : OPTIMA available for all the major road customers

Optima : prospects

- 2010 :
 - Consolidation
 - Study of the extension to 500 000 km.
- >2010 :
 - Algorithms and meta data improvements (Research with road laboratories) on the forecast of slipperiness
 - Extension of the forecast range up to 2 or 3 hours, close to the state of the art
 - Consideration of the environmental parameters of the road