



XIII
INTERNATIONAL
WINTER ROAD
CONGRESS

QUÉBEC, FEBRUARY 8 TO 11, 2010



Québec 

SUSTAINABLE WINTER SERVICE FOR ROAD USERS

*History of sustainable winter road maintenance
service in Latvia 1919 - 2009*

Indra Dziedataja

State Joint Stock Company “Latvian State Roads”

Senior Supervisor of Museum Collection

indra.dziedataja@lvceli.lv



Content

- Basic information about Latvia and its road management
- Beginning of winter road service 1919 – 1940
- Winter road maintenance in Soviet times 1945 - 1990
- Changes in organisation of winter road maintenance service 1990 – 2009
- Conclusions



Basic Information About Latvia

- State territory – 64 589 km²
- Population – 2.26 million
- State road network – 20 180 km
- Number of vehicles – 1.12 million

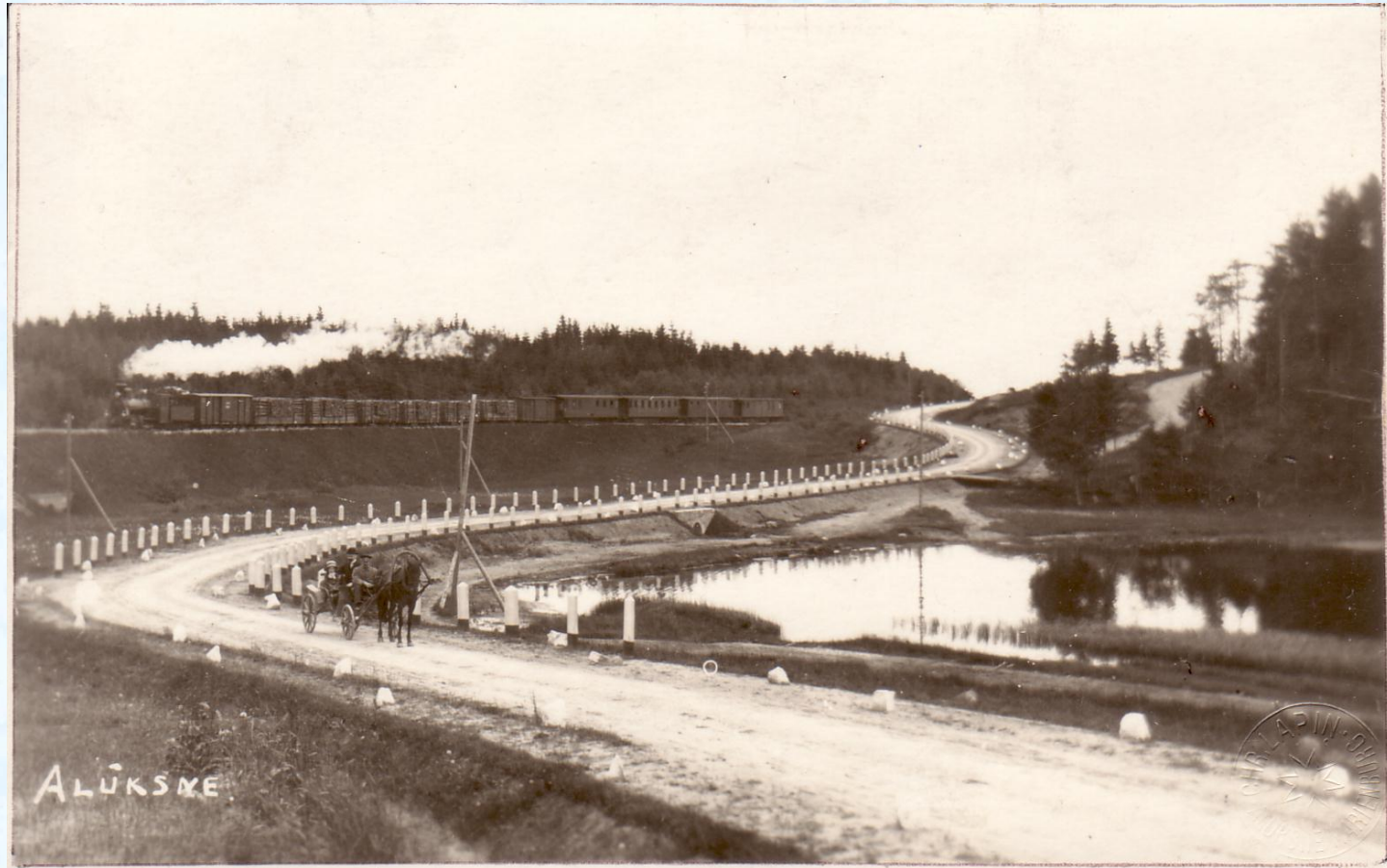


Beginning of Winter Road Service 1919 - 1940

- 1919 – establishment of the Board of Highways and Unpaved Roads;
- Initial road network - 703 km of roads in Latvia
- Number of vehicles – less than 100 in the whole including only 6 vehicles for private needs



Beginning of Winter Road Service 1919 - 1940



Initially (in 1860-ties) shrubs were planted along railways

Beginning of Winter Road Service 1919 - 1940



- In 1930 there were 30 times more cars than in 1919
- Regular bus lines were developed
- Lath shields were introduced

Beginning of Winter Road Service 1919 - 1940



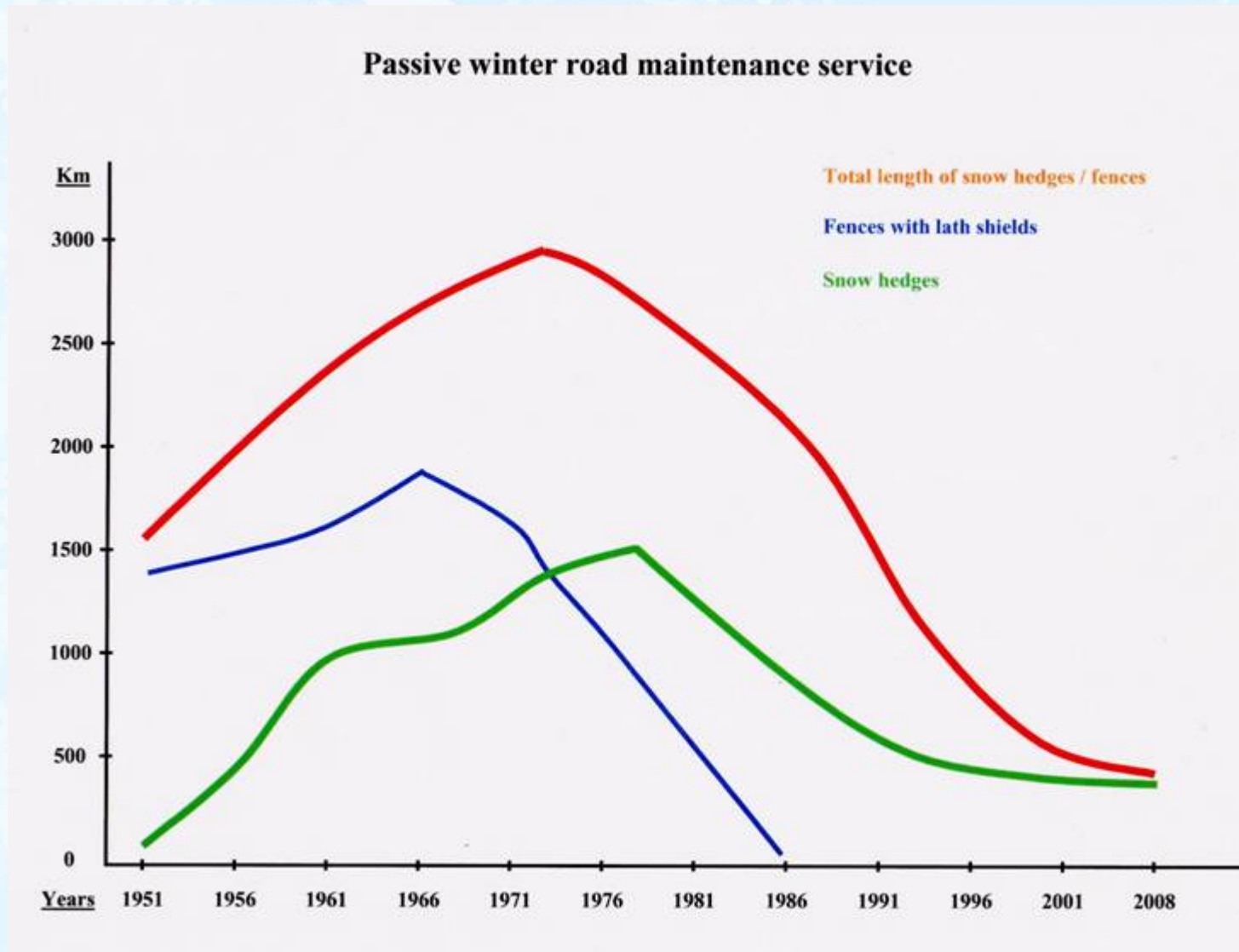
- In 1930-ties active winter road maintenance service was started;
- In 1938 the Board received first tractors with snow ploughs

Winter Road Maintenance in the Soviet Union Period 1945 - 1990

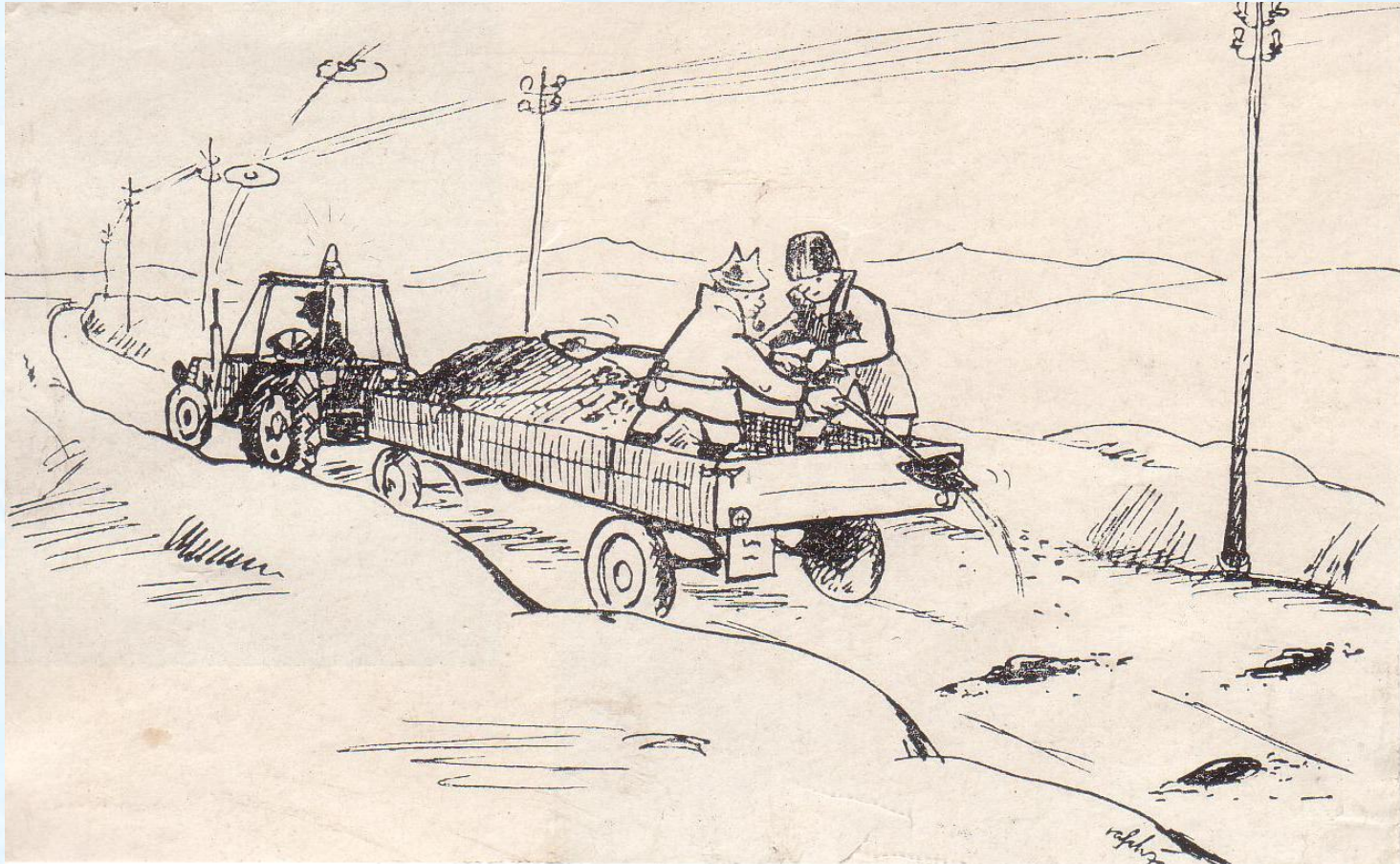
- In 1939 Latvia was occupied by the Soviet Union
- In 1941 the World War II started in the territory of Latvia
- Road sector regained its pre-war level in 5 years after the war



Winter Road Maintenance in the Soviet Union Period 1945 - 1990



Winter Road Maintenance in the Soviet Union Period 1945 - 1990



Increase of development of active winter service

Winter Road Maintenance in the Soviet Union Period 1945 - 1990

In 1960-ties disc spreader was
invented and implemented



Winter Road Maintenance in the Soviet Union Period 1945 - 1990



Shelters for spreading material were constructed near roads

Winter Road Maintenance in the Soviet Union Period 1945 - 1990



Winter Road Maintenance in the Soviet Union Period 1945 - 1990



Combined road work vehicles were put in use

Winter Road Maintenance in the Soviet Union Period 1945 - 1990



Specialized patrol service was established

Winter Road Maintenance in the Soviet Union Period 1945 - 1990



- Labour-consuming and hardly effective work



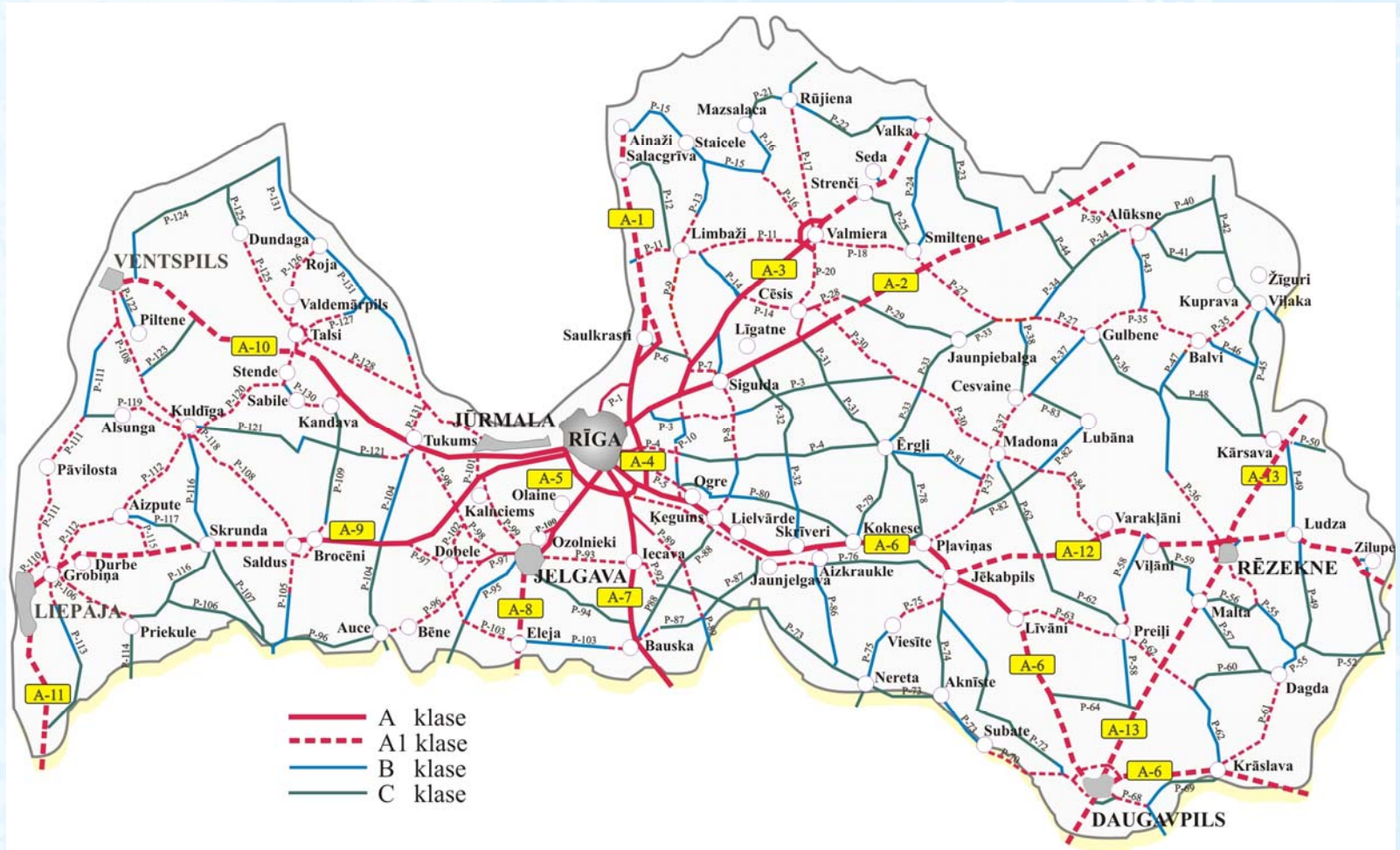
- Implementation of new work methods was difficult

Changes in Organisation of Winter Road Maintenance Service 1991 - 2009



- In 1990 Latvia regained its independence
- Communication with other European countries started

Winter Road Maintenance Classes in the Latvian Road Network



Changes in Organisation of Winter Road Maintenance Service 1991 - 2009



- Excessive improvement of road spreading and clearing works
- Winter tires are mandatory
- Passive winter maintenance has lost its importance

Changes in Organisation of Winter Road Maintenance Service 1991 - 2009



Fir hedges in 2009

Changes in Organisation of Winter Road Maintenance Service 1991 - 2009



48 weather stations in Latvia

Joint information system is developed.

Conclusions



Thank you!

