



XIII
INTERNATIONAL
WINTER ROAD
CONGRESS

QUÉBEC, FEBRUARY 8 TO 11, 2010



Québec 

SUSTAINABLE WINTER SERVICE FOR ROAD USERS

WINTER OPERATIONS COALITION

Bill Hoffman, P.E.

Nevada Department of Transportation - US

Chief Maintenance & Operations Engineer

whoffman@dot.state.nv.us

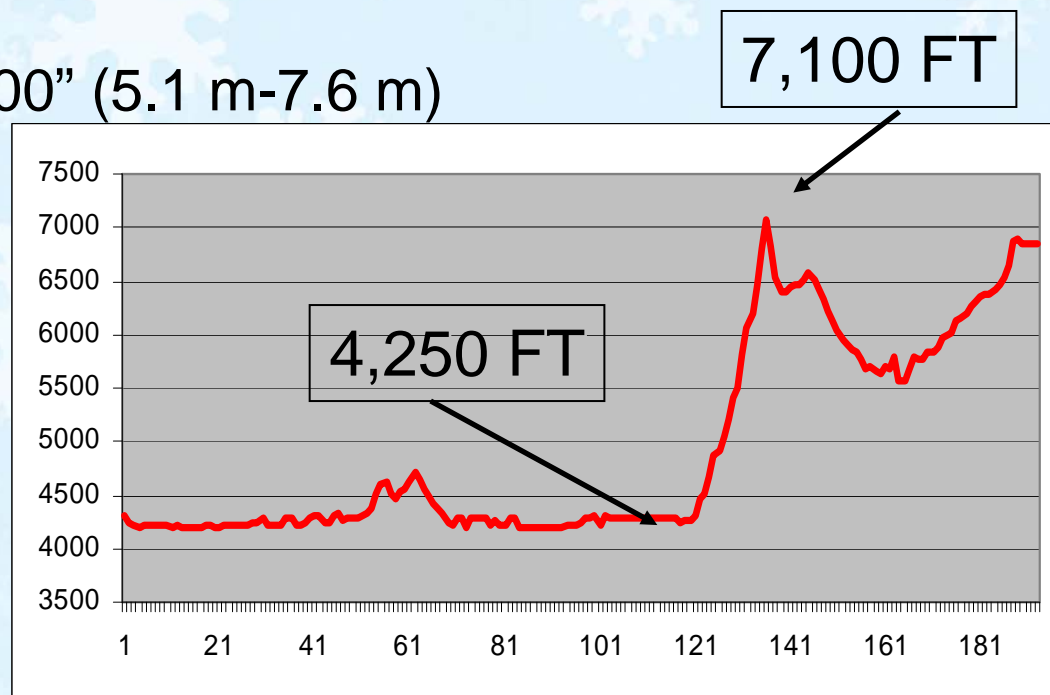


Interstate 80 Western U.S.



THE PROBLEM

- Major economic freight and tourist corridor (50% Trucks)
- 1,209 miles (1946 km) across four states – Rural & Mountainous
- Donner Summit snowfall – 420" (10.7 m)
- Nevada's snowfall – 200"-300" (5.1 m-7.6 m)
- Massive elevation changes
 - 6,200' (1,890 m) in 60 miles (96 km) in CA
 - 2,850' (870 m) in 25 miles (40 km) in UT

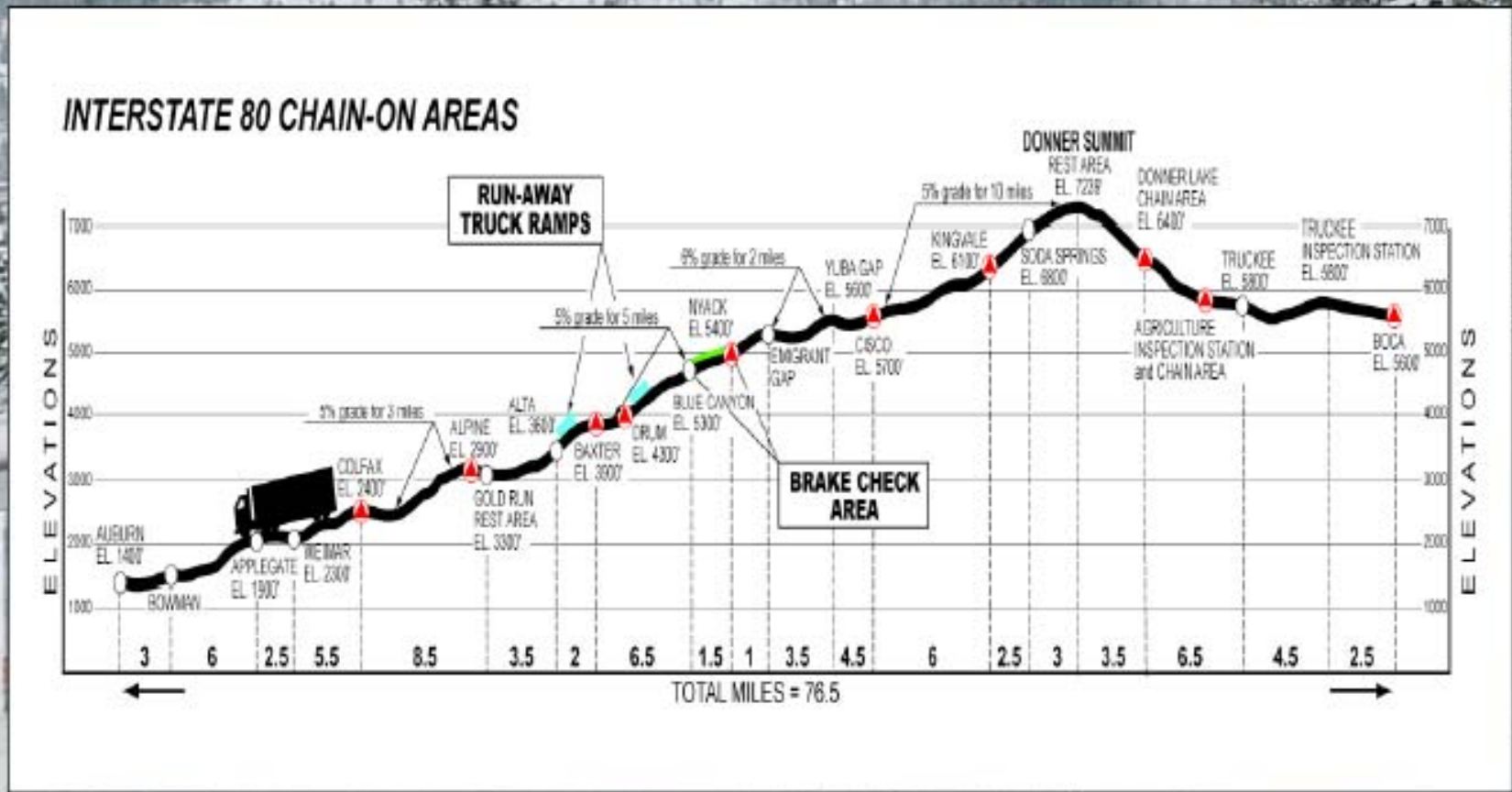


Utah's Profile

I-80 Parley's Canyon - Utah



California – Donner Summit





I-80 Daily Traffic Stats

- 30,000 average daily traffic (ADT)
- 6,000 average daily trucks




**Snow Removal is the easy part...
traffic control to accomplish it...
that is the challenge!**

WYOMING

Blowing Snow / Visibility



THE OUTFALL

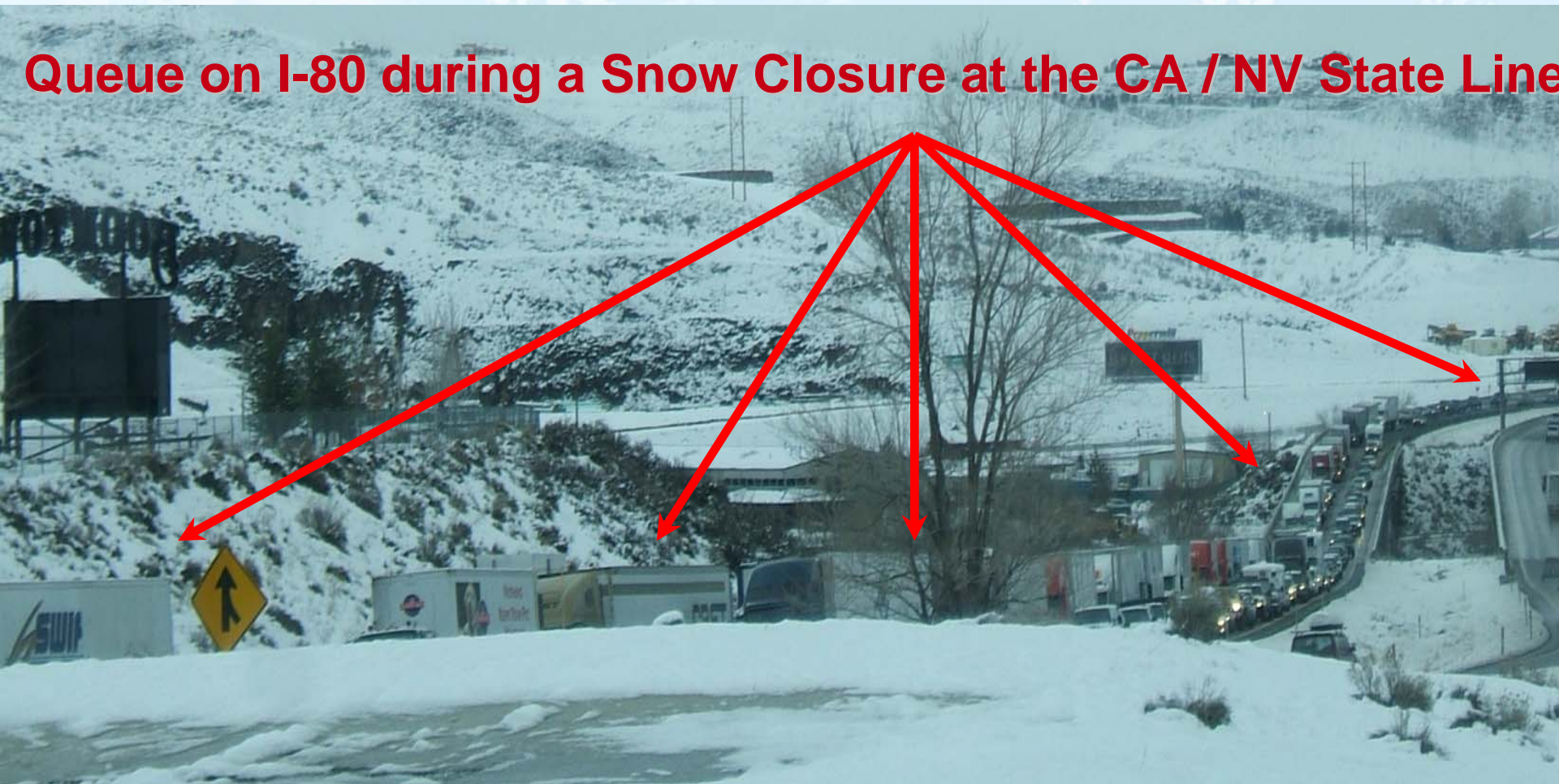
- Delays - Trucking Costs (\$16M / Hour)
- Stranded Motorists 
- Accidents (Not Good !!!)



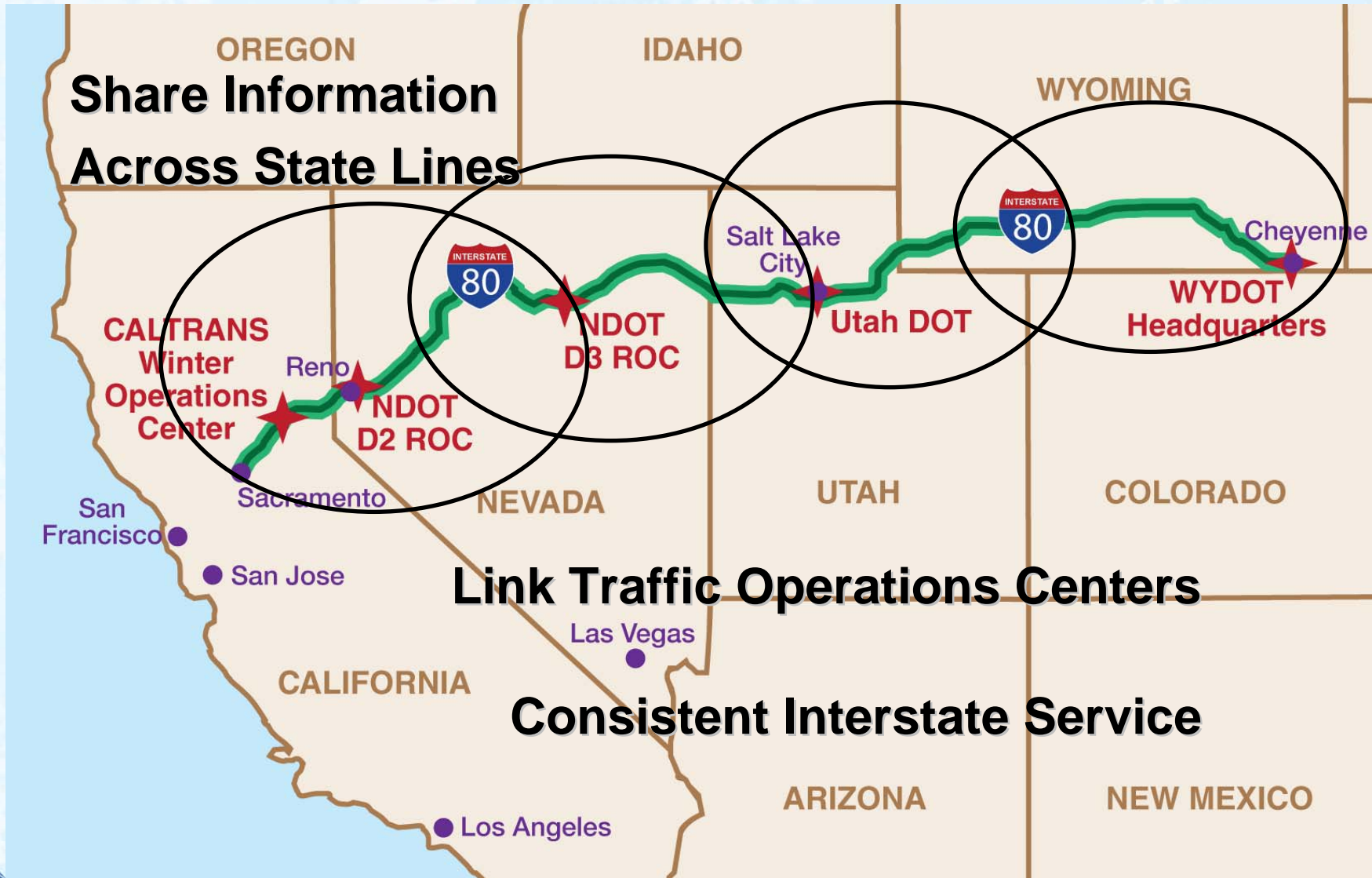
HOURS OF DELAY !!!



Queue on I-80 during a Snow Closure at the CA / NV State Line



THE SOLUTION

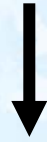


**Share Information
Across State Lines**

Link Traffic Operations Centers

Consistent Interstate Service

THE VEHICLE FOR IMPROVEMENT



I-80 Winter Operations Coalition

- Leverage state resources to create innovative solutions to winter issues on I-80
- Provide a forum for information sharing
- Share data with transportation agencies and public
- Coordinate, Communicate, Cooperate (C³)

Information Sharing



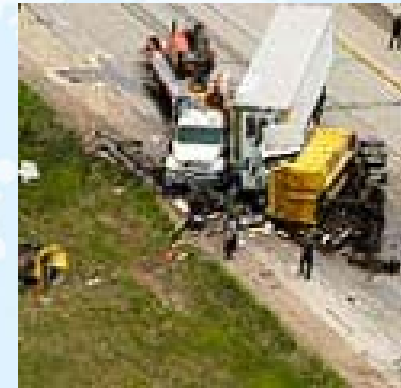
Freeway
Cameras



Advanced Traveler Information



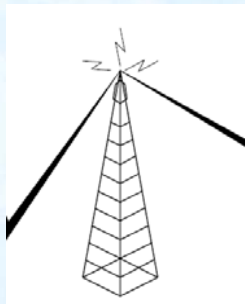
Dynamic Message Signs



Incident Management



MDSS



Highway Advisory Radio



RWIS

Opportunities

- Winter operations / Clearing Roadways
- Multi state coordination (real-time info exchange)
- Freight mobility and regional truck parking
- Funding
- Traveler information across state boundaries
- Road closures affect multiple states
- Multiple weather forecasting and weather data integration activities

KICKOFF MEETING JANUARY 26th & 27th

I-80 Coalition Partners:

- Caltrans
- Nevada DOT
- Utah DOT
- Wyoming DOT

Private Sector Involvement:

- Kimley-Horn
- Northwest Weathernet
- Weather Solutions Group
- Vaisala
- Meridian Environmental

Peer State Input:

- Washington State (I-90 Coalition)
- New Hampshire (I-95 Coalition)



Meeting Take Away Initiatives

- Publicize / Share Winter Maintenance Best Practices
- Market Research / Customer Outreach - Freight Community
 - Tourists / Skiers
- Corridor Specific Forecasts For All Four States
- Link Traffic Operations Centers Across The Entire Corridor
- Consistent Levels of Service Across State Lines
- Common 511 & Road Condition Descriptors Across Lines



WINTER OPERATIONS COALITION


[Home](#)
[Coalition Overview](#)
[Member Agencies](#)
[Upcoming Events](#)
[Coalition Products](#)
[Links](#)
[Contacts](#)

Corridor Overview



Interstate 80 is a major east-west interstate corridor through the states of California, Nevada, Utah and Wyoming, and is a major economic freight and traveler corridor which can better service the public through improved and coordinated maintenance and traveler information services. Integration and continuity of Winter Maintenance Operations across the United States is needed to provide consistent traveler information and similar levels of service

to achieve a higher degree of boundary transparency and improved mobility, as seen by the traveling public. These four states have initiated a single strategic planning effort to reach consensus on how best to link operational processes and data to maximize winter mobility in their I-80 corridor.

Our Purpose

To provide better and more comprehensive I-80 corridor conditions information to both transportation agencies and to travelers.

Build on existing multi-state coordination efforts on I-80 and expand to include general road conditions information, consistent corridor-wide traveler information, proactive traffic management strategies, coordinated maintenance operations and potentially

Done

Internet

100%

Start



C:\Documents and Settina...

Microsoft PowerPoint - [...]

I80COALITION.COM - ...

7:51 AM

Clear Roads = Safe Roads

Safe Roads \neq Safe Drivers





WINTER OPERATIONS COALITION



Thank You!

Safe Travels ...



whoffman@dot.state.nv.us